

Product datasheet for **TA313654**

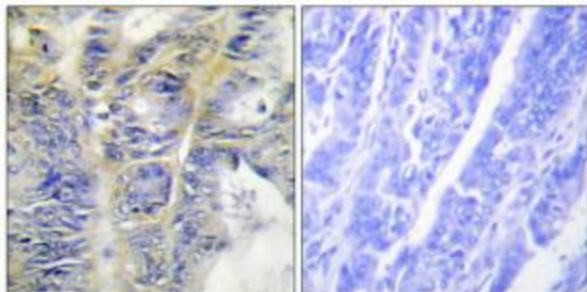
Collagen IV (COL4A5) Rabbit Polyclonal Antibody

Product data:

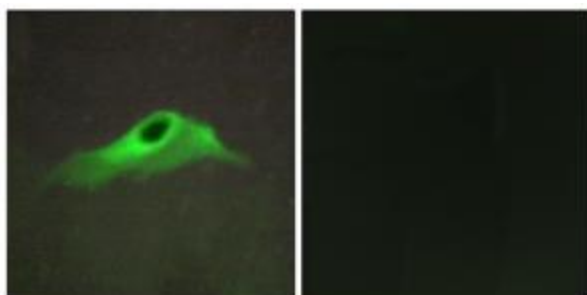
Product Type:	Primary Antibodies
Applications:	IF, IHC
Recommended Dilution:	IHC: 1:50~1:100, IF: 1:100~1:500, ELISA: 1:10000
Reactivity:	Human, Mouse
Host:	Rabbit
Isotype:	IgG
Clonality:	Polyclonal
Immunogen:	The antiserum was produced against synthesized peptide derived from internal of human Collagen IV α 5.
Formulation:	Phosphate buffered saline (without Mg^{2+} and Ca^{2+}), pH 7.4, 150mM NaCl, 0.02% sodium azide and 50% glycerol.
Concentration:	lot specific
Purification:	The antibody was affinity-purified from rabbit antiserum by affinity-chromatography using epitope-specific immunogen.
Conjugation:	Unconjugated
Storage:	Store at $-20^{\circ}C$ as received.
Stability:	Stable for 12 months from date of receipt.
Gene Name:	collagen type IV alpha 5 chain
Database Link:	NP_000486 Entrez Gene 12830 Mouse Entrez Gene 1287 Human P29400
Synonyms:	ASLN; ATS; CA54
Note:	Collagen IV .5 antibody detects endogenous levels of total Collagen IV .5 protein.



[View online »](#)

Product images:

Immunohistochemistry analysis of paraffin-embedded human colon carcinoma tissue using Collagen IV a5 antibody. The picture on the right is treated with the synthesized peptide.



Immunofluorescence analysis of HeLa cells, using Collagen IV a5 antibody. The picture on the right is treated with the synthesized peptide.