

Product datasheet for **TA313653**

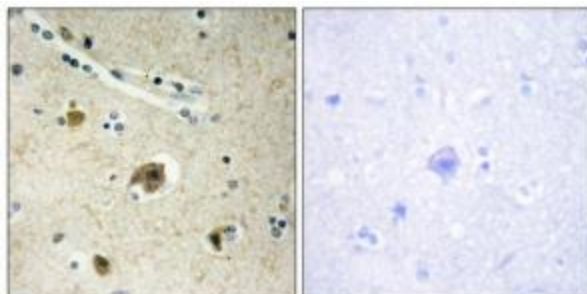
Collagen IV (COL4A4) Rabbit Polyclonal Antibody

Product data:

Product Type:	Primary Antibodies
Applications:	IF, IHC
Recommended Dilution:	IHC: 1:50~1:100, IF: 1:100~1:500, ELISA: 1:1000
Reactivity:	Human
Host:	Rabbit
Isotype:	IgG
Clonality:	Polyclonal
Immunogen:	The antiserum was produced against synthesized peptide derived from internal of human Collagen IV α 4.
Formulation:	Phosphate buffered saline (without Mg^{2+} and Ca^{2+}), pH 7.4, 150mM NaCl, 0.02% sodium azide and 50% glycerol.
Concentration:	lot specific
Purification:	The antibody was affinity-purified from rabbit antiserum by affinity-chromatography using epitope-specific immunogen.
Conjugation:	Unconjugated
Storage:	Store at $-20^{\circ}C$ as received.
Stability:	Stable for 12 months from date of receipt.
Gene Name:	collagen type IV alpha 4 chain
Database Link:	NP_000083 Entrez Gene 1286 Human P53420
Synonyms:	CA44
Note:	Collagen IV .4 antibody detects endogenous levels of total Collagen IV .4 protein.
Protein Families:	Druggable Genome
Protein Pathways:	ECM-receptor interaction, Focal adhesion, Pathways in cancer, Small cell lung cancer



[View online »](#)

Product images:

Immunohistochemistry analysis of paraffin-embedded human brain tissue using Collagen IV a4 antibody. The picture on the right is treated with the synthesized peptide.



Immunofluorescence analysis of COS-7 cells, using Collagen IV a4 antibody. The picture on the right is treated with the synthesized peptide.