

## Product datasheet for **TA313652**

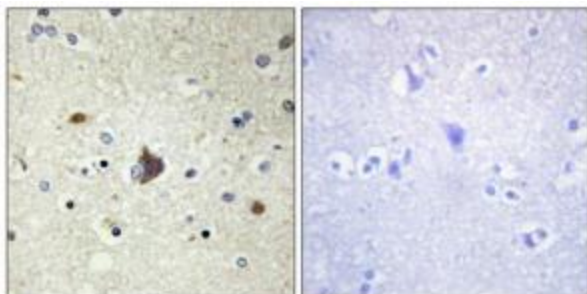
### Collagen IV (COL4A3) Rabbit Polyclonal Antibody

#### Product data:

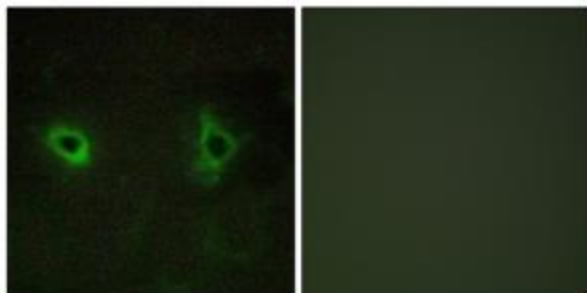
Product Type:	Primary Antibodies
Applications:	IF, IHC
Recommended Dilution:	IHC: 1:50~1:100, IF: 1:100~1:500, ELISA: 1:5000
Reactivity:	Human
Host:	Rabbit
Isotype:	IgG
Clonality:	Polyclonal
Immunogen:	The antiserum was produced against synthesized peptide derived from internal of human Collagen IV $\alpha$ 3.
Formulation:	Phosphate buffered saline (without $Mg^{2+}$ and $Ca^{2+}$ ), pH 7.4, 150mM NaCl, 0.02% sodium azide and 50% glycerol.
Concentration:	lot specific
Purification:	The antibody was affinity-purified from rabbit antiserum by affinity-chromatography using epitope-specific immunogen.
Conjugation:	Unconjugated
Storage:	Store at $-20^{\circ}C$ as received.
Stability:	Stable for 12 months from date of receipt.
Gene Name:	collagen type IV alpha 3 chain
Database Link:	<a href="#">NP_000082</a> <a href="#">Entrez Gene 1285 Human</a> <a href="#">Q01955</a>
Synonyms:	alpha-3 polypeptide; alpha 3 (Goodpasture antigen); alpha 3 type IV collagen; alpha3 type IV collagen; collagen; collagen IV; Goodpasture antigen; OTTHUMP00000195044; TUMSTATIN; tumstatin; type IV
Note:	Collagen IV .3 antibody detects endogenous levels of total Collagen IV .3 protein.
Protein Families:	Druggable Genome



[View online »](#)

**Product images:**

Immunohistochemistry analysis of paraffin-embedded human brain tissue using Collagen IV a3 antibody. The picture on the right is treated with the synthesized peptide.



Immunofluorescence analysis of COS-7 cells, using Collagen IV a3 antibody. The picture on the right is treated with the synthesized peptide.