

Product datasheet for **TA313651**

Collagen IV (COL4A3) Rabbit Polyclonal Antibody

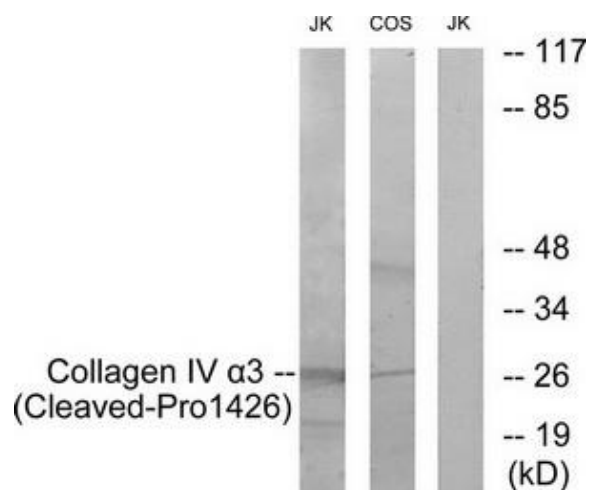
Product data:

Product Type:	Primary Antibodies
Applications:	WB
Recommended Dilution:	WB: 1:500~1:3000, ELISA: 1:40000
Reactivity:	Human
Host:	Rabbit
Isotype:	IgG
Clonality:	Polyclonal
Immunogen:	The antiserum was produced against synthesized peptide derived from human Collagen IV a3.
Formulation:	Phosphate buffered saline (without Mg ²⁺ and Ca ²⁺), pH 7.4, 150mM NaCl, 0.02% sodium azide and 50% glycerol.
Concentration:	lot specific
Purification:	The antibody was affinity-purified from rabbit antiserum by affinity-chromatography using epitope-specific immunogen.
Conjugation:	Unconjugated
Storage:	Store at -20°C as received.
Stability:	Stable for 12 months from date of receipt.
Gene Name:	collagen type IV alpha 3 chain
Database Link:	NP_000082 Entrez Gene 1285 Human Q01955
Synonyms:	alpha-3 polypeptide; alpha 3 (Goodpasture antigen); alpha 3 type IV collagen; alpha3 type IV collagen; collagen; collagen IV; Goodpasture antigen; OTTHUMP00000195044; TUMSTATIN; tumstatin; type IV
Note:	Collagen IV .3 (Cleaved-Pro1426) antibody detects endogenous levels of fragment of activated Collagen IV .3 resulting from cleavage adjacent to Pro1426.
Protein Families:	Druggable Genome



[View online »](#)

Product images:



Western blot analysis of extracts from Jurkat cells treated with etoposide (25uM, 24hours) and COS-7 cells treated with etoposide (25uM, 1hour), using Collagen IV a3 (Cleaved-Pro1426) antibody. The lane on the right is treated with the synthesized peptide.