

Product datasheet for **TA313648**

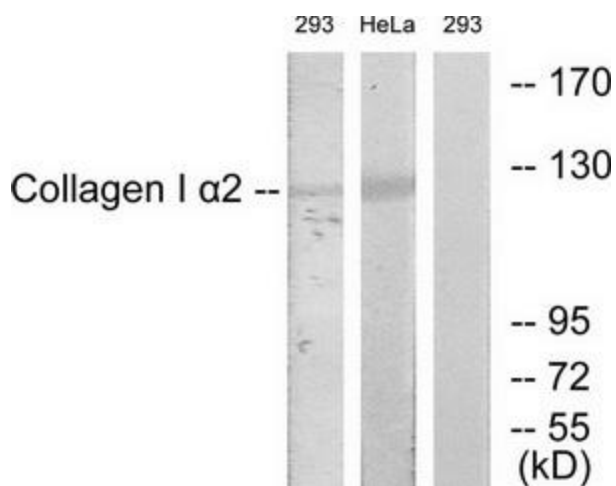
Collagen I (COL1A2) Rabbit Polyclonal Antibody

Product data:

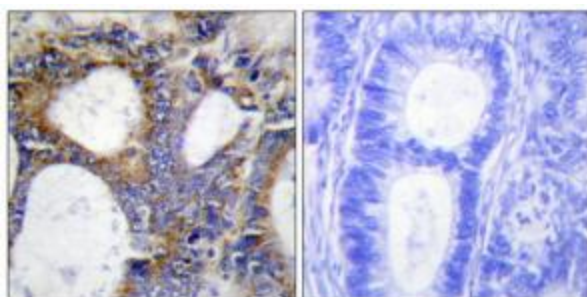
Product Type:	Primary Antibodies
Applications:	IF, IHC, WB
Recommended Dilution:	WB: 1:500~1:3000, IHC: 1:50~1:100, IF: 1:100~1:500, ELISA: 1:20000
Reactivity:	Human
Host:	Rabbit
Isotype:	IgG
Clonality:	Polyclonal
Immunogen:	The antiserum was produced against synthesized peptide derived from internal of human Collagen I α 2.
Formulation:	Phosphate buffered saline (without Mg ²⁺ and Ca ²⁺), pH 7.4, 150mM NaCl, 0.02% sodium azide and 50% glycerol.
Concentration:	lot specific
Purification:	The antibody was affinity-purified from rabbit antiserum by affinity-chromatography using epitope-specific immunogen.
Conjugation:	Unconjugated
Storage:	Store at -20°C as received.
Stability:	Stable for 12 months from date of receipt.
Gene Name:	collagen type I alpha 2 chain
Database Link:	NP_000080 Entrez Gene 1278 Human P08123
Synonyms:	OI4
Note:	Collagen I α 2 antibody detects endogenous levels of total Collagen I α 2 protein.
Protein Families:	Druggable Genome
Protein Pathways:	ECM-receptor interaction, Focal adhesion



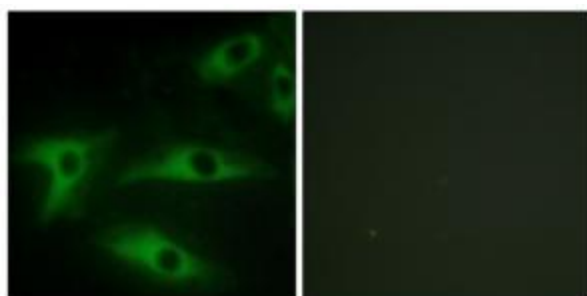
[View online »](#)

Product images:


Western blot analysis of extracts from 293 cells and HeLa cells, using Collagen I a2 antibody. The lane on the right is treated with the synthesized peptide.



Immunohistochemistry analysis of paraffin-embedded human colon carcinoma tissue using Collagen I a2 antibody. The picture on the right is treated with the synthesized peptide.



Immunofluorescence analysis of HeLa cells, using Collagen I a2 antibody. The picture on the right is treated with the synthesized peptide.