

Product datasheet for **TA313647**

Collagen I (COL1A2) Rabbit Polyclonal Antibody

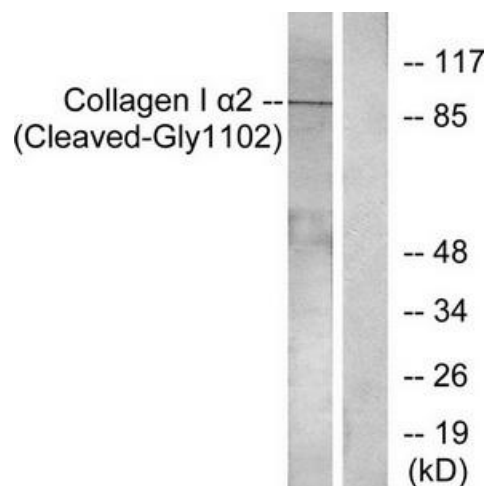
Product data:

Product Type:	Primary Antibodies
Applications:	WB
Recommended Dilution:	WB: 1:500~1:3000, ELISA: 1:10000
Reactivity:	Human
Host:	Rabbit
Isotype:	IgG
Clonality:	Polyclonal
Immunogen:	The antiserum was produced against synthesized peptide derived from human Collagen I a2.
Formulation:	Phosphate buffered saline (without Mg ²⁺ and Ca ²⁺), pH 7.4, 150mM NaCl, 0.02% sodium azide and 50% glycerol.
Concentration:	lot specific
Purification:	The antibody was affinity-purified from rabbit antiserum by affinity-chromatography using epitope-specific immunogen.
Conjugation:	Unconjugated
Storage:	Store at -20°C as received.
Stability:	Stable for 12 months from date of receipt.
Gene Name:	collagen type I alpha 2 chain
Database Link:	NP_000080 Entrez Gene 1278 Human P08123
Synonyms:	OI4
Note:	Collagen I .2 (Cleaved-Gly1102) antibody detects endogenous levels of fragment of activated Collagen I .2 resulting from cleavage adjacent to Gly1102.
Protein Families:	Druggable Genome
Protein Pathways:	ECM-receptor interaction, Focal adhesion



[View online »](#)

Product images:



Western blot analysis of extracts from Jurkat cells, treated with etoposide (25uM, 24hours), using Collagen I α 2 (Cleaved-Gly1102) antibody. The lane on the right is treated with the synthesized peptide.