

Product datasheet for **TA313644**

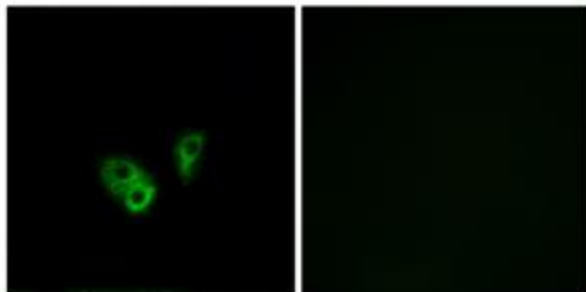
CNGA2 Rabbit Polyclonal Antibody

Product data:

Product Type:	Primary Antibodies
Applications:	IF
Recommended Dilution:	IF: 1:100~1:500, ELISA: 1:40000
Reactivity:	Human, Mouse, Rat
Host:	Rabbit
Isotype:	IgG
Clonality:	Polyclonal
Immunogen:	The antiserum was produced against synthesized peptide derived from internal of human CNGA2.
Formulation:	Phosphate buffered saline (without Mg ²⁺ and Ca ²⁺), pH 7.4, 150mM NaCl, 0.02% sodium azide and 50% glycerol.
Concentration:	lot specific
Purification:	The antibody was affinity-purified from rabbit antiserum by affinity-chromatography using epitope-specific immunogen.
Conjugation:	Unconjugated
Storage:	Store at -20°C as received.
Stability:	Stable for 12 months from date of receipt.
Gene Name:	cyclic nucleotide gated channel alpha 2
Database Link:	NP_005131 Entrez Gene 12789 MouseEntrez Gene 25411 RatEntrez Gene 1260 Human Q16280
Synonyms:	CNCA; CNCA1; CNG2; OCNC1; OCNCa; OCNCALPHA
Note:	CNGA2 antibody detects endogenous levels of total CNGA2 protein.
Protein Families:	Druggable Genome, Ion Channels: Cyclic nucleotide gated, Transmembrane



[View online »](#)

Product images:

Immunofluorescence analysis of A549 cells, using CNGA2 antibody. The picture on the right is treated with the synthesized peptide.