

Product datasheet for **TA313643**

CNG1 (CNGA1) Rabbit Polyclonal Antibody

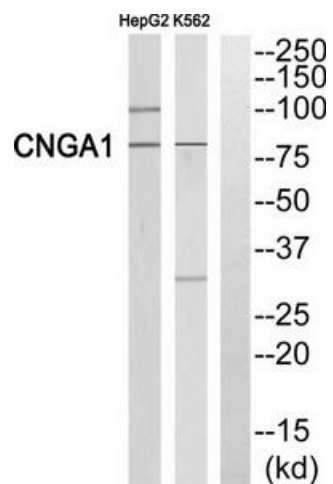
Product data:

Product Type:	Primary Antibodies
Applications:	WB
Recommended Dilution:	WB: 1:500~1:3000, ELISA: 1:40000
Reactivity:	Human, Mouse, Rat
Host:	Rabbit
Isotype:	IgG
Clonality:	Polyclonal
Immunogen:	The antiserum was produced against synthesized peptide derived from internal of human CNGA1.
Formulation:	Phosphate buffered saline (without Mg ²⁺ and Ca ²⁺), pH 7.4, 150mM NaCl, 0.02% sodium azide and 50% glycerol.
Concentration:	lot specific
Purification:	The antibody was affinity-purified from rabbit antiserum by affinity-chromatography using epitope-specific immunogen.
Conjugation:	Unconjugated
Storage:	Store at -20°C as received.
Stability:	Stable for 12 months from date of receipt.
Gene Name:	cyclic nucleotide gated channel alpha 1
Database Link:	NP_000078 Entrez Gene 12788 MouseEntrez Gene 85259 RatEntrez Gene 1259 Human P29973
Synonyms:	CNCG; CNCG1; CNG-1; CNG1; RCNC1; RCNCa; RCNCalpha; RP49
Note:	CNGA1 antibody detects endogenous levels of total CNGA1 protein.
Protein Families:	Druggable Genome, Ion Channels: Cyclic nucleotide gated, Transmembrane



[View online »](#)

Product images:



Western blot analysis of extracts from HepG2 cells and K562 cells, using CNGA1 antibody. The lane on the right is treated with the synthesized peptide.