

Product datasheet for **TA313641**

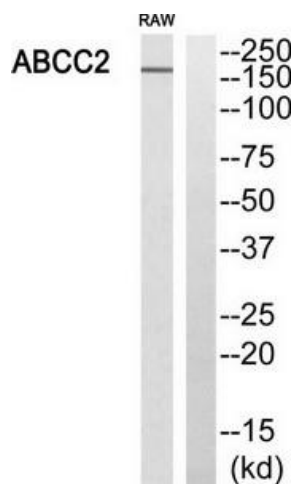
MRP2 (ABCC2) Rabbit Polyclonal Antibody

Product data:

Product Type:	Primary Antibodies
Applications:	WB
Recommended Dilution:	WB: 1:500~1:3000, ELISA: 1:10000
Reactivity:	Human
Host:	Rabbit
Isotype:	IgG
Clonality:	Polyclonal
Immunogen:	The antiserum was produced against synthesized peptide derived from internal of human ABCC2.
Formulation:	Phosphate buffered saline (without Mg ²⁺ and Ca ²⁺), pH 7.4, 150mM NaCl, 0.02% sodium azide and 50% glycerol.
Concentration:	lot specific
Purification:	The antibody was affinity-purified from rabbit antiserum by affinity-chromatography using epitope-specific immunogen.
Conjugation:	Unconjugated
Storage:	Store at -20°C as received.
Stability:	Stable for 12 months from date of receipt.
Gene Name:	ATP binding cassette subfamily C member 2
Database Link:	NP_000383 Entrez Gene 1244 Human Q92887
Synonyms:	ABC30; CMOAT; cMRP; DJS; MRP2
Note:	ABCC2 antibody detects endogenous levels of total ABCC2 protein.
Protein Families:	Druggable Genome, Transmembrane
Protein Pathways:	ABC transporters



[View online »](#)

Product images:


Western blot analysis of extracts from RAW264.7 cells, using ABCC2 antibody. The lane on the right is treated with the synthesized peptide.

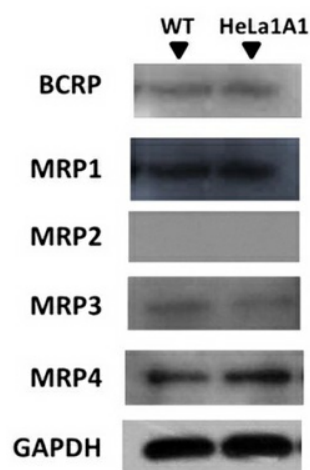


Figure from citation: Western blot analysis of protein expression of BCRP and four MRP family transporters by using anti-ABCG2, anti-ABCC1, anti-ABCC2, anti-ABCC3 and anti-ABCC4 antibody in HeLa and HeLa1A5 cells. [View Citation](#)