

## Product datasheet for **TA313640**

### CMKLR1 Rabbit Polyclonal Antibody

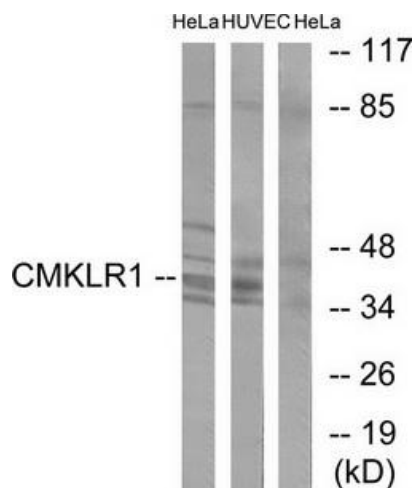
#### Product data:

Product Type:	Primary Antibodies
Applications:	WB
Recommended Dilution:	WB: 1:500~1:3000, ELISA: 1:20000
Reactivity:	Human, Mouse, Rat
Host:	Rabbit
Isotype:	IgG
Clonality:	Polyclonal
Immunogen:	The antiserum was produced against synthesized peptide derived from internal of human CMKLR1.
Formulation:	Phosphate buffered saline (without Mg <sup>2+</sup> and Ca <sup>2+</sup> ), pH 7.4, 150mM NaCl, 0.02% sodium azide and 50% glycerol.
Concentration:	lot specific
Purification:	The antibody was affinity-purified from rabbit antiserum by affinity-chromatography using epitope-specific immunogen.
Conjugation:	Unconjugated
Storage:	Store at -20°C as received.
Stability:	Stable for 12 months from date of receipt.
Gene Name:	chemerin chemokine-like receptor 1
Database Link:	<a href="#">NP_001135815</a> <a href="#">Entrez Gene 14747 Mouse</a> <a href="#">Entrez Gene 60669 Rat</a> <a href="#">Entrez Gene 1240 Human</a> <a href="#">Q99788</a>
Synonyms:	CHEMERINR; ChemR23; DEZ; RVER1
Note:	CMKLR1 antibody detects endogenous levels of total CMKLR1 protein.
Protein Families:	Druggable Genome, GPCR, Transmembrane



[View online »](#)

## Product images:



Western blot analysis of extracts from HepG2 cells, HeLa cells and 293 cells, using CMKLR1 antibody. The lane on the right is treated with the synthesized peptide.