

Product datasheet for **TA313638**

Chemokine Receptor D6 (ACKR2) Rabbit Polyclonal Antibody

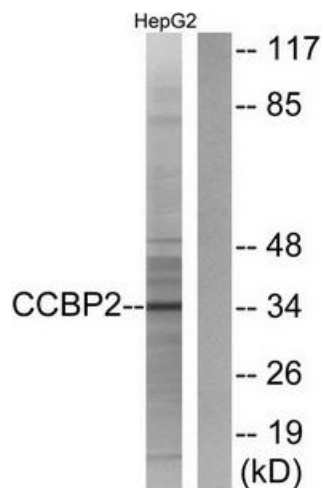
Product data:

Product Type:	Primary Antibodies
Applications:	IF, WB
Recommended Dilution:	WB: 1:500~1:3000, IF: 1:100~1:500, ELISA: 1:1000
Reactivity:	Human
Host:	Rabbit
Isotype:	IgG
Clonality:	Polyclonal
Immunogen:	The antiserum was produced against synthesized peptide derived from C-terminal of human CCBP2.
Formulation:	Phosphate buffered saline (without Mg ²⁺ and Ca ²⁺), pH 7.4, 150mM NaCl, 0.02% sodium azide and 50% glycerol.
Concentration:	lot specific
Purification:	The antibody was affinity-purified from rabbit antiserum by affinity-chromatography using epitope-specific immunogen.
Conjugation:	Unconjugated
Storage:	Store at -20°C as received.
Stability:	Stable for 12 months from date of receipt.
Gene Name:	atypical chemokine receptor 2
Database Link:	NP_001287 Entrez Gene 1238 Human O00590
Synonyms:	CCBP2; CCR9; CCR10; CMKBR9; D6; hD6
Note:	CCBP2 antibody detects endogenous levels of total CCBP2 protein.
Protein Families:	Druggable Genome, GPCR, Transmembrane

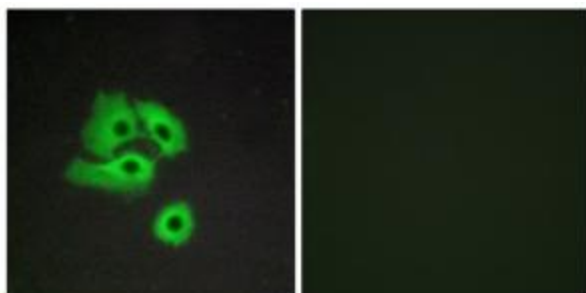


[View online »](#)

Product images:



Western blot analysis of extracts from HepG2 cells, using CCBP2 antibody. The lane on the right is treated with the synthesized peptide.



Immunofluorescence analysis of COS-7 cells, using CCBP2 antibody. The picture on the right is treated with the synthesized peptide.