

Product datasheet for **TA313637**

CCR7 Rabbit Polyclonal Antibody

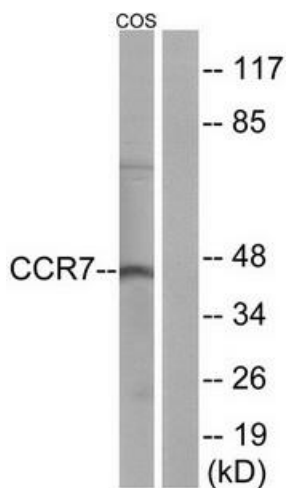
Product data:

Product Type:	Primary Antibodies
Applications:	IF, WB
Recommended Dilution:	WB: 1:500~1:3000, IF: 1:100~1:500, ELISA: 1:40000
Reactivity:	Human
Host:	Rabbit
Isotype:	IgG
Clonality:	Polyclonal
Immunogen:	The antiserum was produced against synthesized peptide derived from internal of human CCR7.
Formulation:	Phosphate buffered saline (without Mg ²⁺ and Ca ²⁺), pH 7.4, 150mM NaCl, 0.02% sodium azide and 50% glycerol.
Concentration:	lot specific
Purification:	The antibody was affinity-purified from rabbit antiserum by affinity-chromatography using epitope-specific immunogen.
Conjugation:	Unconjugated
Storage:	Store at -20°C as received.
Stability:	Stable for 12 months from date of receipt.
Gene Name:	C-C motif chemokine receptor 7
Database Link:	NP_001829 Entrez Gene 1236 Human P32248
Synonyms:	BLR2; CD197; CDw197; CMKBR7; EB11
Note:	CCR7 antibody detects endogenous levels of total CCR7 protein.
Protein Families:	Druggable Genome, GPCR, Transmembrane
Protein Pathways:	Chemokine signaling pathway, Cytokine-cytokine receptor interaction



[View online »](#)

Product images:



Western blot analysis of extracts from COS-7 cells, using CCR7 antibody. The lane on the right is treated with the synthesized peptide.



Immunofluorescence analysis of A549 cells, using CCR7 antibody. The picture on the right is treated with the synthesized peptide.