

Product datasheet for **TA313635**

CLNS1A Rabbit Polyclonal Antibody

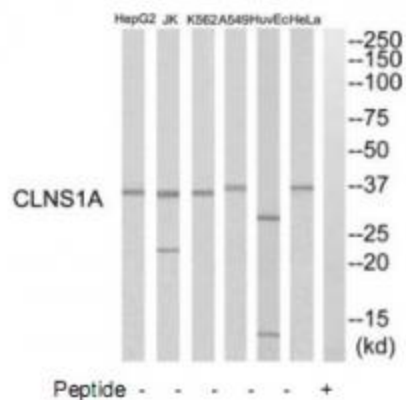
Product data:

Product Type:	Primary Antibodies
Applications:	WB
Recommended Dilution:	WB: 1:500~1:3000, ELISA: 1:5000
Reactivity:	Human
Host:	Rabbit
Isotype:	IgG
Clonality:	Polyclonal
Immunogen:	The antiserum was produced against synthesized peptide derived from C-terminal of human CLNS1A.
Formulation:	Phosphate buffered saline (without Mg ²⁺ and Ca ²⁺), pH 7.4, 150mM NaCl, 0.02% sodium azide and 50% glycerol.
Concentration:	lot specific
Purification:	The antibody was affinity-purified from rabbit antiserum by affinity-chromatography using epitope-specific immunogen.
Conjugation:	Unconjugated
Storage:	Store at -20°C as received.
Stability:	Stable for 12 months from date of receipt.
Gene Name:	chloride nucleotide-sensitive channel 1A
Database Link:	NP_001284 Entrez Gene 1207 Human P54105
Synonyms:	CLCI; CLNS1B; ICl _n
Note:	CLNS1A antibody detects endogenous levels of total CLNS1A protein.
Protein Families:	Ion Channels: Other



[View online »](#)

Product images:



Western blot analysis of extracts from HuvEc cells, K562 cells, HeLa cells, HepG2 cells, A549 cells and Jurkat cells, using CLNS1A antibody. The lane on the right is treated with the synthesized peptide.