

## Product datasheet for **TA313632**

### CLK1 Rabbit Polyclonal Antibody

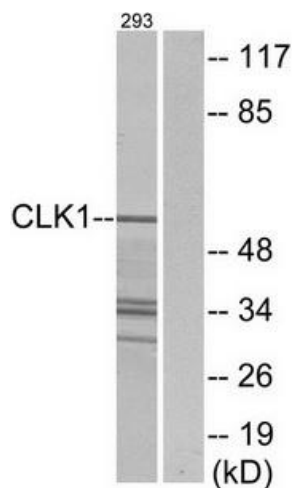
#### Product data:

Product Type:	Primary Antibodies
Applications:	IF, WB
Recommended Dilution:	WB: 1:500~1:3000, IF: 1:100~1:500, ELISA: 1:1000
Reactivity:	Human, Mouse
Host:	Rabbit
Isotype:	IgG
Clonality:	Polyclonal
Immunogen:	he antiserum was produced against synthesized peptide derived from internal of human CLK1.
Formulation:	Phosphate buffered saline (without Mg <sup>2+</sup> and Ca <sup>2+</sup> ), pH 7.4, 150mM NaCl, 0.02% sodium azide and 50% glycerol.
Purification:	The antibody was affinity-purified from rabbit antiserum by affinity-chromatography using epitope-specific immunogen.
Conjugation:	Unconjugated
Storage:	Store at -20°C as received.
Stability:	Stable for 12 months from date of receipt.
Gene Name:	CDC like kinase 1
Database Link:	<a href="#">NP_004062</a> <a href="#">Entrez Gene 12747 Mouse</a> <a href="#">Entrez Gene 1195 Human</a> <a href="#">P49759</a>
Synonyms:	CLK; STY
Note:	CLK1 antibody detects endogenous levels of total CLK1 protein.
Protein Families:	Druggable Genome, Protein Kinase

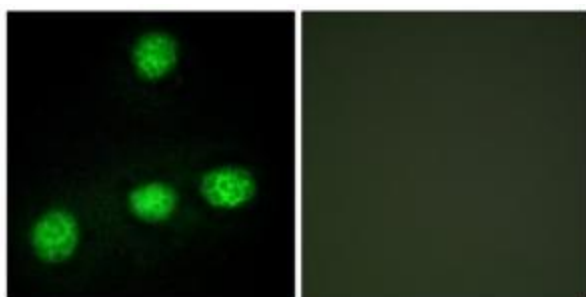


[View online »](#)

## Product images:



Western blot analysis of extracts from 293 cells, using CLK1 antibody. The lane on the right is treated with the synthesized peptide.



Immunofluorescence analysis of HUVEC cells, using CLK1 antibody. The picture on the right is treated with the synthesized peptide.