

Product datasheet for **TA313629**

CLC7 (CLCN7) Rabbit Polyclonal Antibody

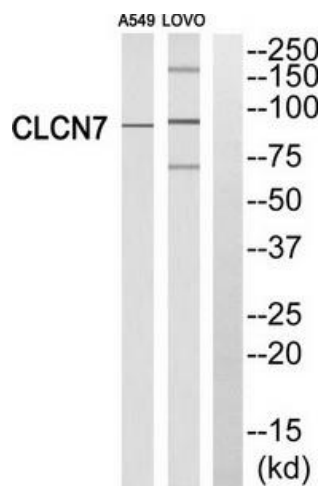
Product data:

Product Type:	Primary Antibodies
Applications:	WB
Recommended Dilution:	WB: 1:500~1:3000, ELISA: 1:40000
Reactivity:	Human, Mouse, Rat
Host:	Rabbit
Isotype:	IgG
Clonality:	Polyclonal
Immunogen:	The antiserum was produced against synthesized peptide derived from N-terminal of human CLCN7.
Formulation:	Phosphate buffered saline (without Mg ²⁺ and Ca ²⁺), pH 7.4, 150mM NaCl, 0.02% sodium azide and 50% glycerol.
Concentration:	lot specific
Purification:	The antibody was affinity-purified from rabbit antiserum by affinity-chromatography using epitope-specific immunogen.
Conjugation:	Unconjugated
Storage:	Store at -20°C as received.
Stability:	Stable for 12 months from date of receipt.
Gene Name:	chloride voltage-gated channel 7
Database Link:	NP_001107803 Entrez Gene 26373 Mouse Entrez Gene 29233 Rat Entrez Gene 1186 Human P51798
Synonyms:	CLC-7; CLC7; OPTA2; OPTB4; PPP1R63
Note:	CLCN7 antibody detects endogenous levels of total CLCN7 protein.
Protein Families:	Druggable Genome, Ion Channels: Other, Transmembrane



[View online »](#)

Product images:



Western blot analysis of extracts from A549 cells and LOVO cells, using CLCN7 antibody. The lane on the right is treated with the synthesized peptide.