

Product datasheet for **TA313628**

CLCN4 Rabbit Polyclonal Antibody

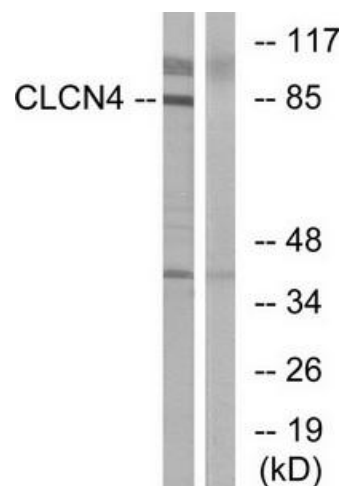
Product data:

Product Type:	Primary Antibodies
Applications:	WB
Recommended Dilution:	WB: 1:500~1:3000, IF: 1:100~1:500, ELISA: 1:60000
Reactivity:	Human, Mouse, Rat
Host:	Rabbit
Isotype:	IgG
Clonality:	Polyclonal
Immunogen:	The antiserum was produced against synthesized peptide derived from internal of human CLCN4.
Formulation:	Phosphate buffered saline (without Mg ²⁺ and Ca ²⁺), pH 7.4, 150mM NaCl, 0.02% sodium azide and 50% glycerol.
Concentration:	lot specific
Purification:	The antibody was affinity-purified from rabbit antiserum by affinity-chromatography using epitope-specific immunogen.
Conjugation:	Unconjugated
Storage:	Store at -20°C as received.
Stability:	Stable for 12 months from date of receipt.
Gene Name:	chloride voltage-gated channel 4
Database Link:	NP_001821 Entrez Gene 12727 Mouse Entrez Gene 60586 Rat Entrez Gene 1183 Human P51793
Synonyms:	CIC-4; CIC-4A; CLC4
Note:	CLCN4 antibody detects endogenous levels of total CLCN4 protein.
Protein Families:	Druggable Genome, Ion Channels: Other, Transmembrane



[View online »](#)

Product images:



Western blot analysis of extracts from MCF-7 cells, using CLCN4 antibody. The lane on the right is treated with the synthesized peptide.