

## Product datasheet for **TA313627**

### **CKS1 (CKS1B) Rabbit Polyclonal Antibody**

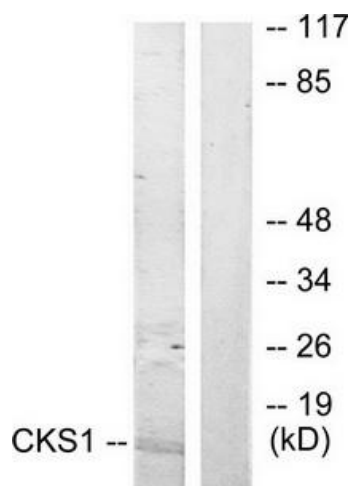
#### **Product data:**

<b>Product Type:</b>	Primary Antibodies
<b>Applications:</b>	IF, WB
<b>Recommended Dilution:</b>	WB: 1:500~1:3000, IF: 1:100~1:500, ELISA: 1:20000
<b>Reactivity:</b>	Human, Mouse
<b>Host:</b>	Rabbit
<b>Isotype:</b>	IgG
<b>Clonality:</b>	Polyclonal
<b>Immunogen:</b>	The antiserum was produced against synthesized peptide derived from N-terminal of human CKS1.
<b>Formulation:</b>	Phosphate buffered saline (without Mg <sup>2+</sup> and Ca <sup>2+</sup> ), pH 7.4, 150mM NaCl, 0.02% sodium azide and 50% glycerol.
<b>Concentration:</b>	lot specific
<b>Purification:</b>	The antibody was affinity-purified from rabbit antiserum by affinity-chromatography using epitope-specific immunogen.
<b>Conjugation:</b>	Unconjugated
<b>Storage:</b>	Store at -20°C as received.
<b>Stability:</b>	Stable for 12 months from date of receipt.
<b>Gene Name:</b>	CDC28 protein kinase regulatory subunit 1B
<b>Database Link:</b>	<a href="#">NP_001817</a> <a href="#">Entrez Gene 54124 Mouse</a> <a href="#">Entrez Gene 1163 Human</a> <a href="#">P61024</a>
<b>Synonyms:</b>	CKS1; ckshs1; PNAS-16; PNAS-18
<b>Note:</b>	CKS1 antibody detects endogenous levels of total CKS1 protein.
<b>Protein Families:</b>	Druggable Genome, Stem cell - Pluripotency
<b>Protein Pathways:</b>	Pathways in cancer, Small cell lung cancer

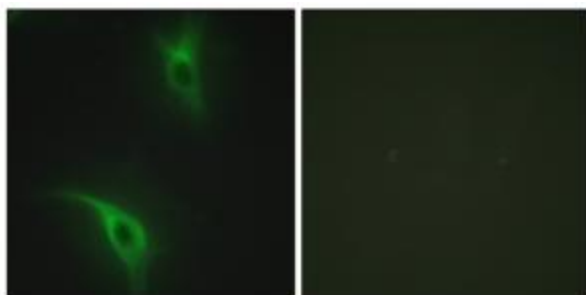


[View online »](#)

## Product images:



Western blot analysis of extracts from Jurkat cells, treated with serum (20%, 15mins), using CKS1 antibody. The lane on the right is treated with the synthesized peptide.



Immunofluorescence analysis of HeLa cells, using CKS1 antibody. The picture on the right is treated with the synthesized peptide.