

Product datasheet for **TA313626**

CKMT2 Rabbit Polyclonal Antibody

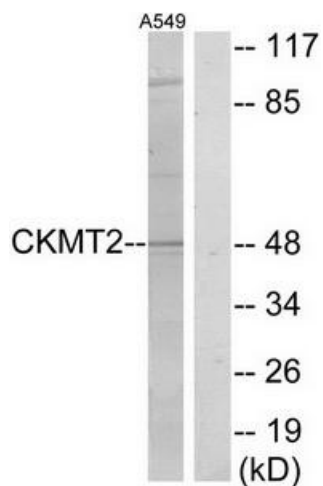
Product data:

Product Type:	Primary Antibodies
Applications:	IF, WB
Recommended Dilution:	WB: 1:500~1:3000, IF: 1:100~1:500, ELISA: 1:40000
Reactivity:	Human, Mouse, Rat
Host:	Rabbit
Isotype:	IgG
Clonality:	Polyclonal
Immunogen:	The antiserum was produced against synthesized peptide derived from internal of human CKMT2.
Formulation:	Phosphate buffered saline (without Mg ²⁺ and Ca ²⁺), pH 7.4, 150mM NaCl, 0.02% sodium azide and 50% glycerol.
Concentration:	lot specific
Purification:	The antibody was affinity-purified from rabbit antiserum by affinity-chromatography using epitope-specific immunogen.
Conjugation:	Unconjugated
Storage:	Store at -20°C as received.
Stability:	Stable for 12 months from date of receipt.
Gene Name:	creatine kinase, mitochondrial 2
Database Link:	NP_001093205 Entrez Gene 76722 MouseEntrez Gene 688698 RatEntrez Gene 1160 Human P17540
Synonyms:	SMTCK
Note:	CKMT2 antibody detects endogenous levels of total CKMT2 protein.
Protein Families:	Druggable Genome
Protein Pathways:	Arginine and proline metabolism, Metabolic pathways

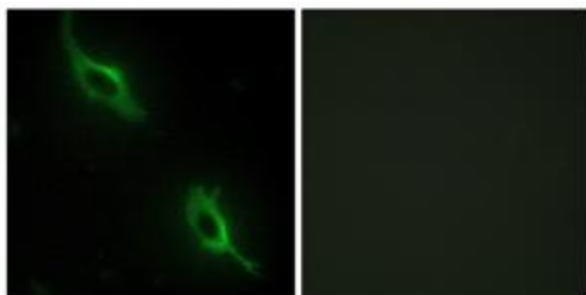


[View online »](#)

Product images:



Western blot analysis of extracts from A549 cells, using CKMT2 antibody. The lane on the right is treated with the synthesized peptide.



Immunofluorescence analysis of NIH/3T3 cells, using CKMT2 antibody. The picture on the right is treated with the synthesized peptide.