

Product datasheet for **TA313625**

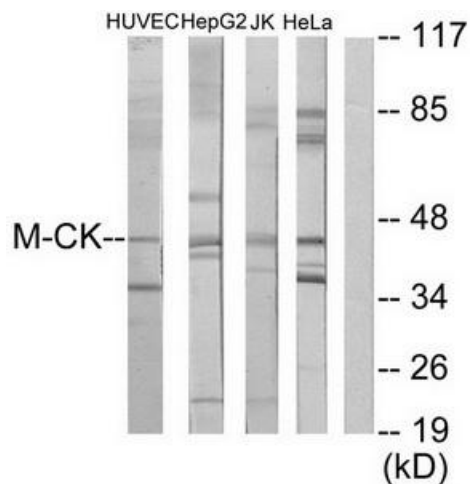
Creatine kinase M type (CKM) Rabbit Polyclonal Antibody

Product data:

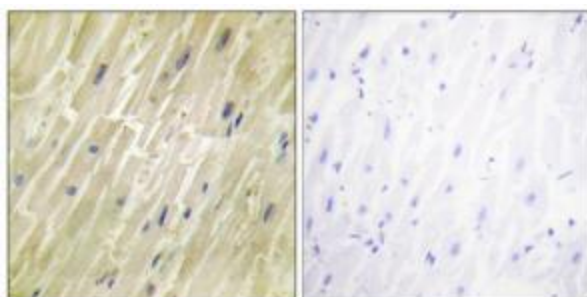
Product Type:	Primary Antibodies
Applications:	IF, IHC, WB
Recommended Dilution:	WB: 1:500~1:3000, IHC: 1:50~1:100, IF: 1:100~1:500, ELISA: 1:40000
Reactivity:	Human, Mouse, Rat
Host:	Rabbit
Isotype:	IgG
Clonality:	Polyclonal
Immunogen:	The antiserum was produced against synthesized peptide derived from N-terminal of human M-CK.
Formulation:	Phosphate buffered saline (without Mg ²⁺ and Ca ²⁺), pH 7.4, 150mM NaCl, 0.02% sodium azide and 50% glycerol.
Concentration:	lot specific
Purification:	The antibody was affinity-purified from rabbit antiserum by affinity-chromatography using epitope-specific immunogen.
Conjugation:	Unconjugated
Storage:	Store at -20°C as received.
Stability:	Stable for 12 months from date of receipt.
Gene Name:	creatine kinase, M-type
Database Link:	NP_001815 Entrez Gene 12715 Mouse Entrez Gene 24265 Rat Entrez Gene 1158 Human P06732
Synonyms:	CKMM; M-CK
Note:	M-CK antibody detects endogenous levels of total M-CK protein.
Protein Families:	Druggable Genome
Protein Pathways:	Arginine and proline metabolism, Metabolic pathways



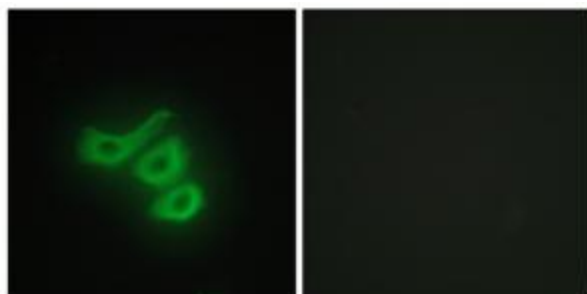
[View online »](#)

Product images:


Western blot analysis of extracts from HUVEC cells, HepG2 cells, Jurkat cells and HeLa cells, using M-CK antibody. The lane on the right is treated with the synthesized peptide.



Immunohistochemistry analysis of paraffin-embedded human heart tissue using M-CK antibody. The picture on the right is treated with the synthesized peptide.



Immunofluorescence analysis of HepG2 cells, using M-CK antibody. The picture on the right is treated with the synthesized peptide.