

Product datasheet for **TA313624**

CHRNB1 Rabbit Polyclonal Antibody

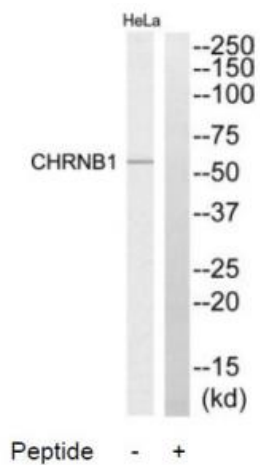
Product data:

Product Type:	Primary Antibodies
Applications:	WB
Recommended Dilution:	WB: 1:500~1:3000, ELISA: 1:5000
Reactivity:	Human, Mouse, Rat
Host:	Rabbit
Isotype:	IgG
Clonality:	Polyclonal
Immunogen:	The antiserum was produced against synthesized peptide derived from N-terminal of human CHRNB1.
Formulation:	Phosphate buffered saline (without Mg ²⁺ and Ca ²⁺), pH 7.4, 150mM NaCl, 0.02% sodium azide and 50% glycerol.
Concentration:	lot specific
Purification:	The antibody was affinity-purified from rabbit antiserum by affinity-chromatography using epitope-specific immunogen.
Conjugation:	Unconjugated
Storage:	Store at -20°C as received.
Stability:	Stable for 12 months from date of receipt.
Gene Name:	cholinergic receptor nicotinic beta 1 subunit
Database Link:	NP_000738 Entrez Gene 11443 MouseEntrez Gene 24261 RatEntrez Gene 1140 Human P11230
Synonyms:	AChRB; CHRN; CMS1D; CMS2A; CMS2C; SCCMS
Note:	CHRNB1 antibody detects endogenous levels of total CHRNB1 protein.
Protein Families:	Druggable Genome, Ion Channels: Cys-loop Receptors, Transmembrane



[View online »](#)

Product images:



Western blot analysis of extracts from HeLa cells, using CHRNA1 antibody. The lane on the right is treated with the synthesized peptide.