

Product datasheet for **TA313623**

Muscarinic Acetylcholine Receptor M5 (CHRM5) Rabbit Polyclonal Antibody

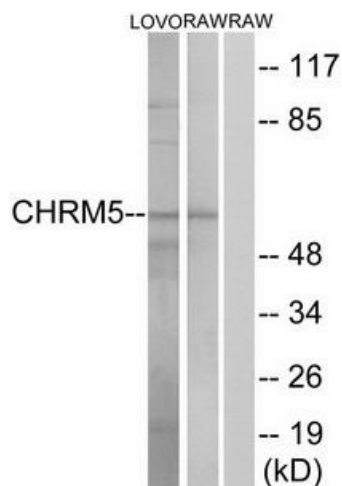
Product data:

Product Type:	Primary Antibodies
Applications:	IF, WB
Recommended Dilution:	WB: 1:500~1:3000, IF: 1:100~1:500, ELISA: 1:5000
Reactivity:	Human
Host:	Rabbit
Isotype:	IgG
Clonality:	Polyclonal
Immunogen:	The antiserum was produced against synthesized peptide derived from internal of human CHRM5.
Formulation:	Phosphate buffered saline (without Mg ²⁺ and Ca ²⁺), pH 7.4, 150mM NaCl, 0.02% sodium azide and 50% glycerol.
Concentration:	lot specific
Purification:	The antibody was affinity-purified from rabbit antiserum by affinity-chromatography using epitope-specific immunogen.
Conjugation:	Unconjugated
Storage:	Store at -20°C as received.
Stability:	Stable for 12 months from date of receipt.
Gene Name:	cholinergic receptor muscarinic 5
Database Link:	NP_036257 Entrez Gene 1133 Human P08912
Synonyms:	HM5
Note:	CHRM5 antibody detects endogenous levels of total CHRM5 protein.
Protein Families:	Druggable Genome, GPCR, Transmembrane
Protein Pathways:	Calcium signaling pathway, Neuroactive ligand-receptor interaction, Regulation of actin cytoskeleton

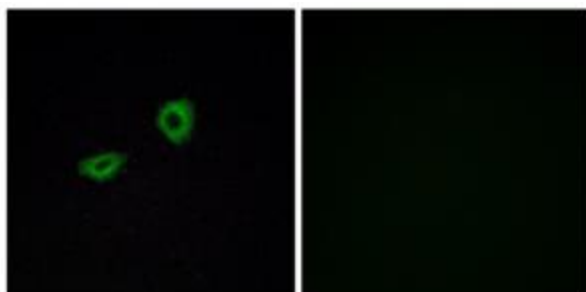


[View online »](#)

Product images:



Western blot analysis of extracts from Jurkat cells, using CHRM5 antibody. The lane on the right is treated with the synthesized peptide.



Immunofluorescence analysis of A549 cells, using CHRM5 antibody. The picture on the right is treated with the synthesized peptide.