

Product datasheet for **TA313622**

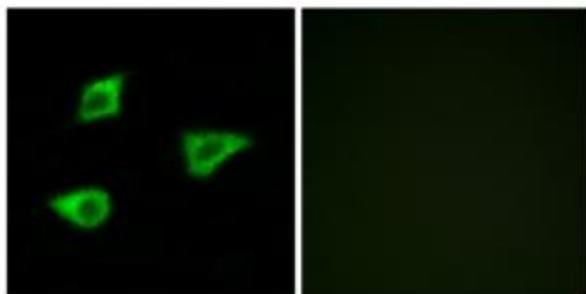
Muscarinic Acetylcholine Receptor M4 (CHRM4) Rabbit Polyclonal Antibody

Product data:

| | |
|-----------------------|---|
| Product Type: | Primary Antibodies |
| Applications: | IF |
| Recommended Dilution: | IF: 1:100~1:500, ELISA: 1:10000 |
| Reactivity: | Human, Mouse, Rat |
| Host: | Rabbit |
| Isotype: | IgG |
| Clonality: | Polyclonal |
| Immunogen: | The antiserum was produced against synthesized peptide derived from internal of human CHRM4. |
| Formulation: | Phosphate buffered saline (without Mg ²⁺ and Ca ²⁺), pH 7.4, 150mM NaCl, 0.02% sodium azide and 50% glycerol. |
| Purification: | The antibody was affinity-purified from rabbit antiserum by affinity-chromatography using epitope-specific immunogen. |
| Conjugation: | Unconjugated |
| Storage: | Store at -20°C as received. |
| Stability: | Stable for 12 months from date of receipt. |
| Gene Name: | cholinergic receptor muscarinic 4 |
| Database Link: | NP_000732 Entrez Gene 12672 Mouse Entrez Gene 25111 Rat Entrez Gene 1132 Human P08173 |
| Synonyms: | HM4; M4R |
| Note: | CHRM4 antibody detects endogenous levels of total CHRM4 protein. |
| Protein Families: | Druggable Genome |
| Protein Pathways: | Neuroactive ligand-receptor interaction, Regulation of actin cytoskeleton |



[View online »](#)

Product images:

Immunofluorescence analysis of LOVO cells, using CHRM4 antibody. The picture on the right is treated with the synthesized peptide.