

Product datasheet for **TA313620**

CHKL (CHKB) Rabbit Polyclonal Antibody

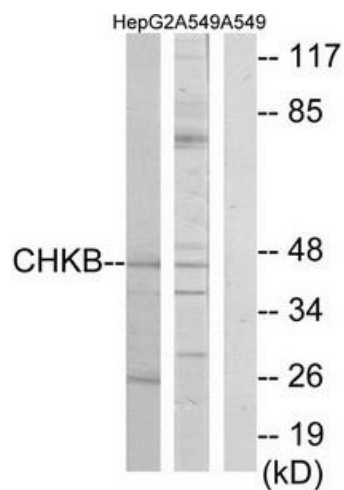
Product data:

Product Type:	Primary Antibodies
Applications:	WB
Recommended Dilution:	WB: 1:500~1:3000, ELISA: 1:20000
Reactivity:	Human
Host:	Rabbit
Isotype:	IgG
Clonality:	Polyclonal
Immunogen:	The antiserum was produced against synthesized peptide derived from internal of human CHKB.
Formulation:	Phosphate buffered saline (without Mg ²⁺ and Ca ²⁺), pH 7.4, 150mM NaCl, 0.02% sodium azide and 50% glycerol.
Concentration:	lot specific
Purification:	The antibody was affinity-purified from rabbit antiserum by affinity-chromatography using epitope-specific immunogen.
Conjugation:	Unconjugated
Storage:	Store at -20°C as received.
Stability:	Stable for 12 months from date of receipt.
Gene Name:	choline kinase beta
Database Link:	NP_005189 Entrez Gene 1120 Human Q9Y259
Synonyms:	CHETK; CHKL; CK; CKB; CKEKB; EK; EKB; MDCMC
Note:	CHKB antibody detects endogenous levels of total CHKB protein.
Protein Families:	Druggable Genome
Protein Pathways:	Glycerophospholipid metabolism, Metabolic pathways



[View online »](#)

Product images:



Western blot analysis of extracts from HepG2 cells and A549 cells, using CHKB antibody. The lane on the right is treated with the synthesized peptide.