

## Product datasheet for **TA313619**

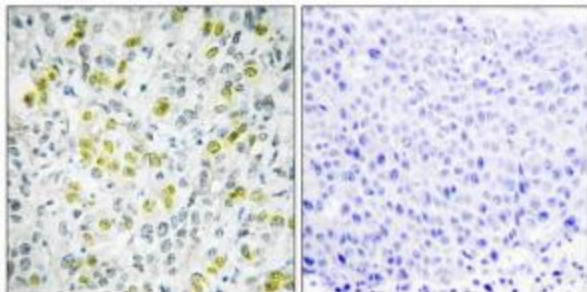
### CHD4 Rabbit Polyclonal Antibody

#### Product data:

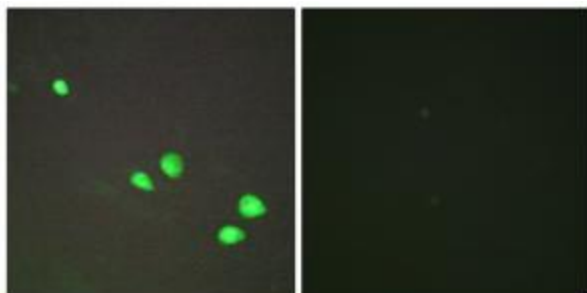
Product Type:	Primary Antibodies
Applications:	IF, IHC
Recommended Dilution:	IHC: 1:50~1:100, IF: 1:100~1:500, ELISA: 1:20000
Reactivity:	Human, Mouse
Host:	Rabbit
Isotype:	IgG
Clonality:	Polyclonal
Immunogen:	The antiserum was produced against synthesized peptide derived from internal of human CHD4.
Formulation:	Phosphate buffered saline (without Mg <sup>2+</sup> and Ca <sup>2+</sup> ), pH 7.4, 150mM NaCl, 0.02% sodium azide and 50% glycerol.
Concentration:	lot specific
Purification:	The antibody was affinity-purified from rabbit antiserum by affinity-chromatography using epitope-specific immunogen.
Conjugation:	Unconjugated
Storage:	Store at -20°C as received.
Stability:	Stable for 12 months from date of receipt.
Gene Name:	chromodomain helicase DNA binding protein 4
Database Link:	<a href="#">NP_001264</a> <a href="#">Entrez Gene 107932 Mouse</a> <a href="#">Entrez Gene 1108 Human</a> <a href="#">Q14839</a>
Synonyms:	CHD-4; Mi-2b; Mi2-BETA
Note:	CHD4 antibody detects endogenous levels of total CHD4 protein.
Protein Families:	Druggable Genome, Transcription Factors



[View online »](#)

**Product images:**

Immunohistochemistry analysis of paraffin-embedded human liver carcinoma tissue, using CHD4 antibody. The picture on the right is treated with the synthesized peptide.



Immunofluorescence analysis of HepG2 cells, using CHD4 antibody. The picture on the right is treated with the synthesized peptide.