

Product datasheet for **TA313618**

RCC1 Rabbit Polyclonal Antibody

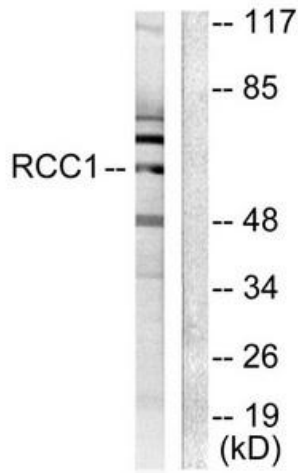
Product data:

Product Type:	Primary Antibodies
Applications:	IHC, WB
Recommended Dilution:	WB: 1:500~1:3000, IHC: 1:50~1:100, ELISA: 1:1000
Reactivity:	Human
Host:	Rabbit
Isotype:	IgG
Clonality:	Polyclonal
Immunogen:	The antiserum was produced against synthesized peptide derived from human RCC1.
Formulation:	Phosphate buffered saline (without Mg ²⁺ and Ca ²⁺), pH 7.4, 150mM NaCl, 0.02% sodium azide and 50% glycerol.
Concentration:	lot specific
Purification:	The antibody was affinity-purified from rabbit antiserum by affinity-chromatography using epitope-specific immunogen.
Conjugation:	Unconjugated
Storage:	Store at -20°C as received.
Stability:	Stable for 12 months from date of receipt.
Gene Name:	regulator of chromosome condensation 1
Database Link:	NP_001041659 Entrez Gene 1104 Human P18754
Synonyms:	CHC1; RCC1-I; SNHG3-RCC1
Note:	RCC1 antibody detects endogenous levels of total RCC1 protein.

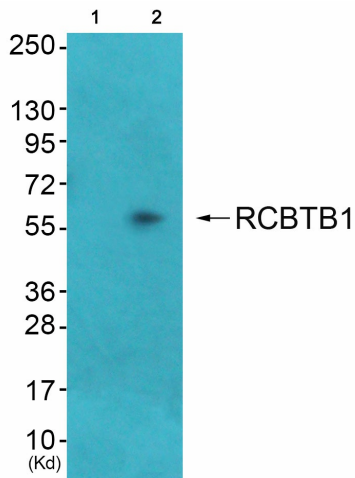


[View online »](#)

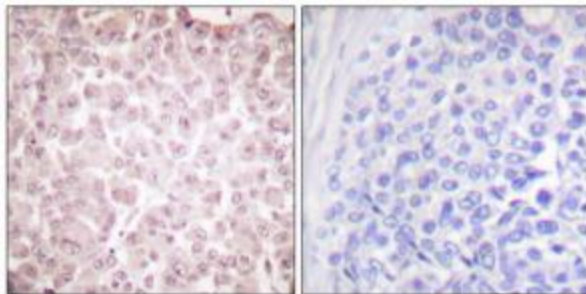
Product images:



Western blot analysis of extracts from LOVO cells, using RCC1 antibody (#TA313618). The lane on the right is treated with the synthesized peptide.



Western blot analysis of extracts from HepG2 cells (Lane 2), cells (Lane 3) and cells (Lane 4), using RCC1 Antibody. The lane on the left is treated with synthesized peptide.



Immunohistochemical analysis of paraffin-embedded human breast carcinoma tissue using RCC1 antibody (#TA313618). The picture on the right is treated with the synthesized peptide.