

Product datasheet for **TA313616**

hCG beta (CGB3) Rabbit Polyclonal Antibody

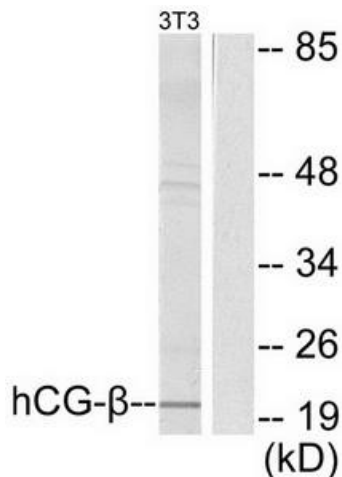
Product data:

Product Type:	Primary Antibodies
Applications:	IHC, WB
Recommended Dilution:	WB: 1:500~1:3000, IHC: 1:50~1:100, ELISA: 1:10000
Reactivity:	Human
Host:	Rabbit
Isotype:	IgG
Clonality:	Polyclonal
Immunogen:	The antiserum was produced against synthesized peptide derived from human hCG β .
Formulation:	Phosphate buffered saline (without Mg ²⁺ and Ca ²⁺), pH 7.4, 150mM NaCl, 0.02% sodium azide and 50% glycerol.
Concentration:	lot specific
Purification:	The antibody was affinity-purified from rabbit antiserum by affinity-chromatography using epitope-specific immunogen.
Conjugation:	Unconjugated
Storage:	Store at -20°C as received.
Stability:	Stable for 12 months from date of receipt.
Gene Name:	chorionic gonadotropin beta subunit 3
Database Link:	NP_000728 Entrez Gene 1082 Human P0DN86
Synonyms:	CGB3; CGB5; CGB7; CGB8; hCGB
Note:	hCG . antibody detects endogenous levels of total hCG . protein.
Protein Families:	Druggable Genome

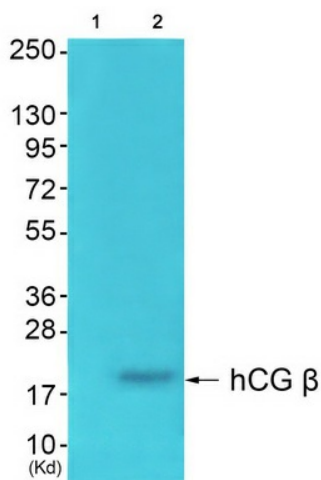


[View online »](#)

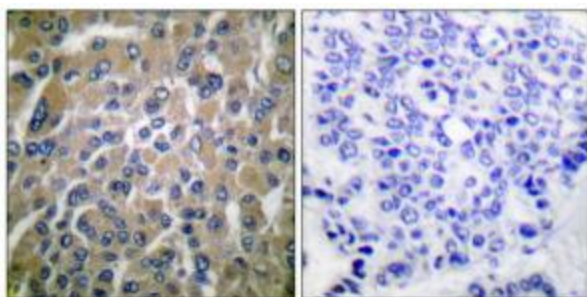
Product images:



Western blot analysis of extracts from NIH/3T3 cells, using hCG β antibody (#TA313616). The lane on the right is treated with the synthesized peptide.



Western blot analysis of extracts from HepG2 cells, using hCG β Antibody. The lane on the left is treated with synthesized peptide.



Immunohistochemical analysis of paraffin-embedded human breast carcinoma tissue using hCG β antibody (#TA313616). The picture on the right is treated with the synthesized peptide.