

Product datasheet for **TA313614**

DPP1 (CTSC) Rabbit Polyclonal Antibody

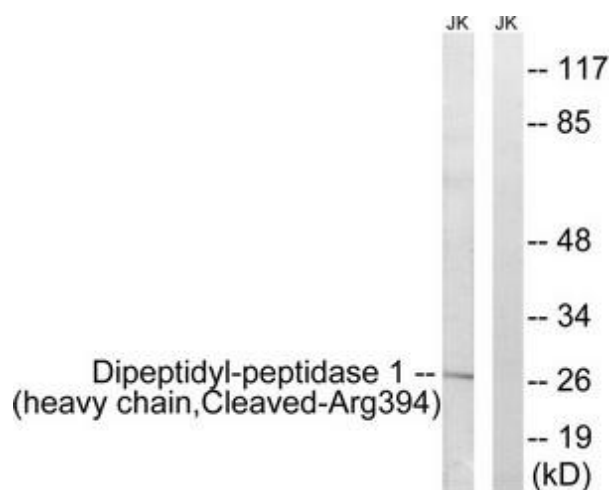
Product data:

Product Type:	Primary Antibodies
Applications:	WB
Recommended Dilution:	WB: 1:500~1:3000, ELISA: 1:20000
Reactivity:	Human
Host:	Rabbit
Isotype:	IgG
Clonality:	Polyclonal
Immunogen:	The antiserum was produced against synthesized peptide derived from human Dipeptidyl-peptidase 1.
Formulation:	Phosphate buffered saline (without Mg ²⁺ and Ca ²⁺), pH 7.4, 150mM NaCl, 0.02% sodium azide and 50% glycerol.
Concentration:	lot specific
Purification:	The antibody was affinity-purified from rabbit antiserum by affinity-chromatography using epitope-specific immunogen.
Conjugation:	Unconjugated
Storage:	Store at -20°C as received.
Stability:	Stable for 12 months from date of receipt.
Gene Name:	cathepsin C
Database Link:	NP_001107645 Entrez Gene 1075 Human P53634
Synonyms:	CPPI; DPP-I; DPP1; DPPI; HMS; JP; JPD; PALS; PDON1; PLS
Note:	Dipeptidyl-peptidase 1 (heavy chain, Cleaved-Arg394) antibody detects endogenous levels of fragment of activated Dipeptidyl-peptidase 1 resulting from cleavage adjacent to Arg394.
Protein Families:	Druggable Genome, Protease
Protein Pathways:	Lysosome



[View online »](#)

Product images:



Western blot analysis of extracts from Jurkat cells, treated with etoposide (25uM, 1hour), using Dipeptidyl-peptidase 1 (heavy chain, Cleaved-Arg394) antibody. The lane on the right is treated with the synthesized peptide.