

Product datasheet for **TA313611**

CEBPE Rabbit Polyclonal Antibody

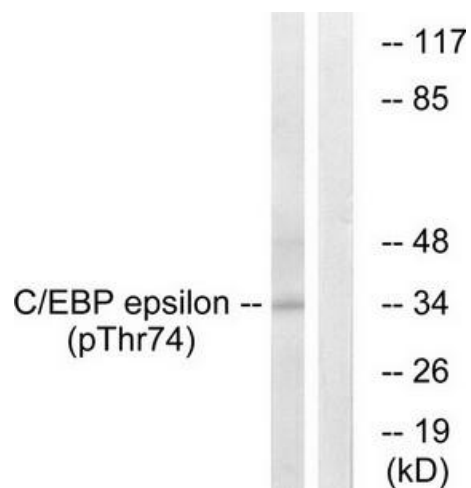
Product data:

Product Type:	Primary Antibodies
Applications:	WB
Recommended Dilution:	WB: 1:500~1:3000, ELISA: 1:20000
Reactivity:	Human
Modifications:	Phospho-specific
Host:	Rabbit
Isotype:	IgG
Clonality:	Polyclonal
Immunogen:	The antiserum was produced against synthesized phosphopeptide derived from human C/EBP-e around the phosphorylation site of threonine 74 (P-G-TP-P-A)
Formulation:	Phosphate buffered saline (without Mg ²⁺ and Ca ²⁺), pH 7.4, 150mM NaCl, 0.02% sodium azide and 50% glycerol.
Concentration:	lot specific
Purification:	The antibody was affinity-purified from rabbit antiserum by affinity-chromatography using epitope-specific immunogen.
Conjugation:	Unconjugated
Storage:	Store at -20°C as received.
Stability:	Stable for 12 months from date of receipt.
Gene Name:	CCAAT/enhancer binding protein epsilon
Database Link:	NP_001796 Entrez Gene 1053 Human Q15744
Synonyms:	C; CRP1; EBP-epsilon
Note:	C/EBP-. (Phospho-Thr74) antibody detects endogenous levels of C/EBP-. only when phosphorylated at threonine 74
Protein Families:	Druggable Genome, Transcription Factors



[View online »](#)

Product images:



Western blot analysis of extracts from HUVEC cells, treated with UV (15mins), using C/EBP-e (Phospho-Thr74) antibody. The lane on the right is treated with the synthesized peptide.