

Product datasheet for **TA313609**

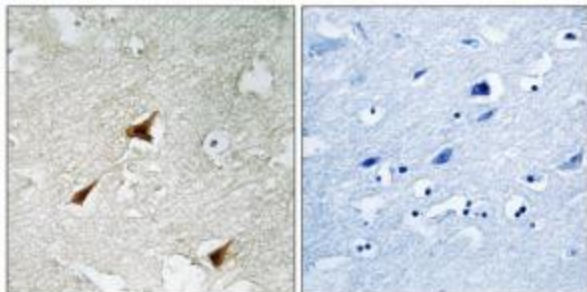
p19 INK4d (CDKN2D) Rabbit Polyclonal Antibody

Product data:

Product Type:	Primary Antibodies
Applications:	IHC
Recommended Dilution:	IHC: 1:50~1:100, ELISA: 1:40000
Reactivity:	Human
Host:	Rabbit
Isotype:	IgG
Clonality:	Polyclonal
Immunogen:	The antiserum was produced against synthesized peptide derived from internal of human P19 INK4d.
Formulation:	Phosphate buffered saline (without Mg ²⁺ and Ca ²⁺), pH 7.4, 150mM NaCl, 0.02% sodium azide and 50% glycerol.
Concentration:	lot specific
Purification:	The antibody was affinity-purified from rabbit antiserum by affinity-chromatography using epitope-specific immunogen.
Conjugation:	Unconjugated
Storage:	Store at -20°C as received.
Stability:	Stable for 12 months from date of receipt.
Gene Name:	cyclin-dependent kinase inhibitor 2D
Database Link:	NP_001791 Entrez Gene 1032 Human P55273
Synonyms:	INK4D; p19; p19-INK4D
Note:	P19 INK4d antibody detects endogenous levels of total P19 INK4d protein.
Protein Families:	Druggable Genome
Protein Pathways:	Cell cycle



[View online »](#)

Product images:

Immunohistochemistry analysis of paraffin-embedded human brain tissue, using P19 INK4d antibody. The picture on the right is treated with the synthesized peptide.