

Product datasheet for **TA313608**

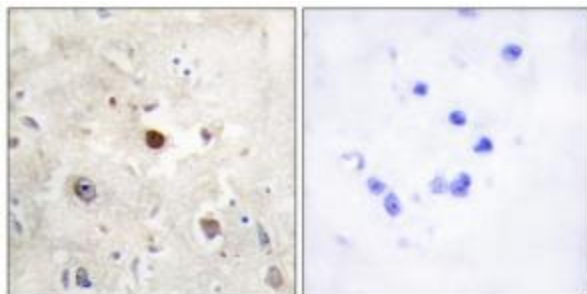
p57 Kip2 (CDKN1C) Rabbit Polyclonal Antibody

Product data:

Product Type:	Primary Antibodies
Applications:	IHC
Recommended Dilution:	IHC: 1:50~1:100, ELISA: 1:10000
Reactivity:	Human
Host:	Rabbit
Isotype:	IgG
Clonality:	Polyclonal
Immunogen:	The antiserum was produced against synthesized peptide derived from internal of human p57KIP2.
Formulation:	Phosphate buffered saline (without Mg ²⁺ and Ca ²⁺), pH 7.4, 150mM NaCl, 0.02% sodium azide and 50% glycerol.
Concentration:	lot specific
Purification:	The antibody was affinity-purified from rabbit antiserum by affinity-chromatography using epitope-specific immunogen.
Conjugation:	Unconjugated
Storage:	Store at -20°C as received.
Stability:	Stable for 12 months from date of receipt.
Gene Name:	cyclin-dependent kinase inhibitor 1C
Database Link:	NP_000067 Entrez Gene 1028 Human P49918
Synonyms:	BWCR; BWS; KIP2; p57; p57Kip2; WBS
Note:	p57KIP2 antibody detects endogenous levels of total p57KIP2 protein.
Protein Families:	Druggable Genome
Protein Pathways:	Cell cycle



[View online »](#)

Product images:

Immunohistochemistry analysis of paraffin-embedded human brain tissue, using p57KIP2 antibody. The picture on the right is treated with the synthesized peptide.