

## Product datasheet for **TA313603**

### LI Cadherin (CDH17) Rabbit Polyclonal Antibody

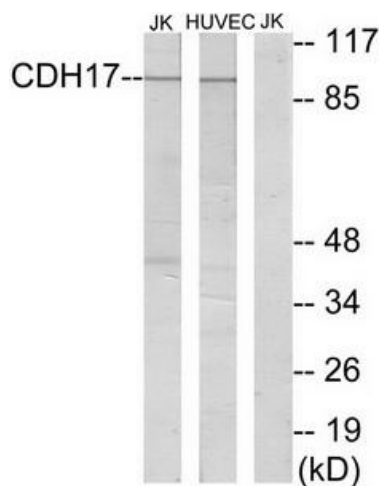
#### Product data:

Product Type:	Primary Antibodies
Applications:	IF, WB
Recommended Dilution:	WB: 1:500~1:3000, IF: 1:100~1:500, ELISA: 1:40000
Reactivity:	Human
Host:	Rabbit
Isotype:	IgG
Clonality:	Polyclonal
Immunogen:	The antiserum was produced against synthesized peptide derived from internal of human CDH17.
Formulation:	Phosphate buffered saline (without Mg <sup>2+</sup> and Ca <sup>2+</sup> ), pH 7.4, 150mM NaCl, 0.02% sodium azide and 50% glycerol.
Concentration:	lot specific
Purification:	The antibody was affinity-purified from rabbit antiserum by affinity-chromatography using epitope-specific immunogen.
Conjugation:	Unconjugated
Storage:	Store at -20°C as received.
Stability:	Stable for 12 months from date of receipt.
Gene Name:	cadherin 17
Database Link:	<a href="#">NP_001138135</a> <a href="#">Entrez Gene 1015 Human</a> <a href="#">Q12864</a>
Synonyms:	CDH16; HPT-1; HPT1
Note:	CDH17 antibody detects endogenous levels of total CDH17 protein.
Protein Families:	Transmembrane

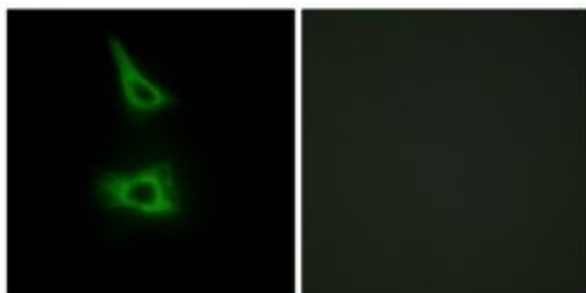


[View online »](#)

## Product images:



Western blot analysis of extracts from Jurkat cells and HUVEC cells, using CDH17 antibody. The lane on the right is treated with the synthesized peptide.



Immunofluorescence analysis of HeLa cells, using CDH17 antibody. The picture on the right is treated with the synthesized peptide.