

Product datasheet for **TA313602**

M Cadherin (CDH15) Rabbit Polyclonal Antibody

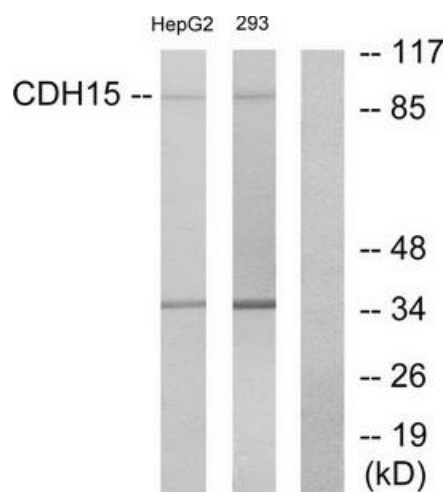
Product data:

Product Type:	Primary Antibodies
Applications:	WB
Recommended Dilution:	WB: 1:500~1:3000, ELISA: 1:10000
Reactivity:	Human, Mouse, Rat
Host:	Rabbit
Isotype:	IgG
Clonality:	Polyclonal
Immunogen:	The antiserum was produced against synthesized peptide derived from internal of human CDH15.
Formulation:	Phosphate buffered saline (without Mg ²⁺ and Ca ²⁺), pH 7.4, 150mM NaCl, 0.02% sodium azide and 50% glycerol.
Concentration:	lot specific
Purification:	The antibody was affinity-purified from rabbit antiserum by affinity-chromatography using epitope-specific immunogen.
Conjugation:	Unconjugated
Storage:	Store at -20°C as received.
Stability:	Stable for 12 months from date of receipt.
Gene Name:	cadherin 15
Database Link:	NP_004924 Entrez Gene 12555 MouseEntrez Gene 361432 RatEntrez Gene 1013 Human P55291
Synonyms:	CDH3; CDH14; CDHM; MCAD; MRD3
Note:	CDH15 antibody detects endogenous levels of total CDH15 protein.
Protein Families:	Transmembrane
Protein Pathways:	Cell adhesion molecules (CAMs)



[View online »](#)

Product images:



Western blot analysis of extracts from HepG2 cells and 293 cells, using CDH15 antibody. The lane on the right is treated with the synthesized peptide.