

Product datasheet for **TA313593**

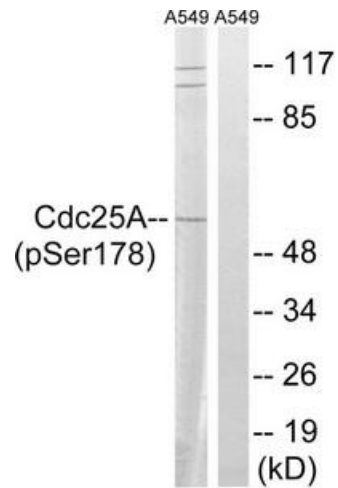
CDC25A Rabbit Polyclonal Antibody

Product data:

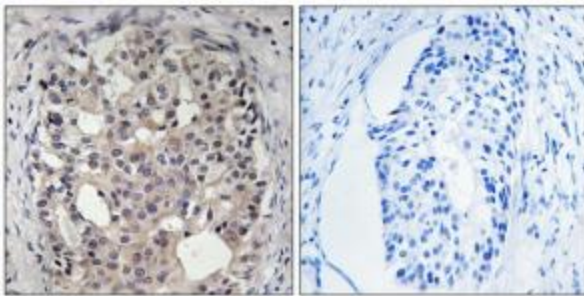
Product Type:	Primary Antibodies
Applications:	IHC, WB
Recommended Dilution:	WB: 1:500~1:3000, IHC: 1:50~1:100, ELISA: 1:10000
Reactivity:	Human, Mouse, Rat
Modifications:	Phospho-specific
Host:	Rabbit
Isotype:	IgG
Clonality:	Polyclonal
Immunogen:	The antiserum was produced against synthesized phosphopeptide derived from human CDC25A around the phosphorylation site of serine 178 (Q-N-SP-A-P).
Formulation:	Phosphate buffered saline (without Mg ²⁺ and Ca ²⁺), pH 7.4, 150mM NaCl, 0.02% sodium azide and 50% glycerol.
Concentration:	lot specific
Purification:	The antibody was affinity-purified from rabbit antiserum by affinity-chromatography using epitope-specific immunogen.
Conjugation:	Unconjugated
Storage:	Store at -20°C as received.
Stability:	Stable for 12 months from date of receipt.
Gene Name:	cell division cycle 25A
Database Link:	NP_001780 Entrez Gene 12530 Mouse Entrez Gene 171102 Rat Entrez Gene 993 Human P30304
Synonyms:	CDC25A2
Note:	CDC25A (Phospho-Ser178) antibody detects endogenous levels of CDC25A only when phosphorylated at serine 178.
Protein Families:	Druggable Genome, Phosphatase
Protein Pathways:	Cell cycle, Progesterone-mediated oocyte maturation



[View online »](#)

Product images:

Western blot analysis of extracts from A549 cells, treated with UV (15mins), using CDC25A (Phospho-Ser178) antibody. The lane on the right is treated with the synthesized peptide.



Immunohistochemistry analysis of paraffin-embedded human breast carcinoma tissue using CDC25A (Phospho-Ser178) antibody. The picture on the right is treated with the synthesized peptide.