

Product datasheet for **TA313588**

CDC25A Rabbit Polyclonal Antibody

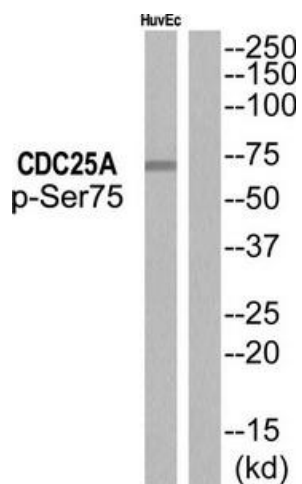
Product data:

Product Type:	Primary Antibodies
Applications:	IHC, WB
Recommended Dilution:	WB: 1:500~1:3000, IHC: 1:50~1:100, ELISA: 1:10000
Modifications:	Phospho-specific
Host:	Rabbit
Isotype:	IgG
Clonality:	Polyclonal
Immunogen:	The antiserum was produced against synthesized phosphopeptide derived from human CDC25A around the phosphorylation site of Ser75
Formulation:	Phosphate buffered saline (without Mg ²⁺ and Ca ²⁺), pH 7.4, 150mM NaCl, 0.02% sodium azide and 50% glycerol.
Concentration:	lot specific
Purification:	The antibody was affinity-purified from rabbit antiserum by affinity-chromatography using epitope-specific immunogen.
Conjugation:	Unconjugated
Storage:	Store at -20°C as received.
Stability:	Stable for 12 months from date of receipt.
Gene Name:	cell division cycle 25A
Database Link:	NP_001780 Entrez Gene 993 Human P30304
Synonyms:	CDC25A2
Note:	CDC25A (Phospho-Ser75) Antibody detects endogenous levels of CDC25A only when phosphorylated at Ser75.
Protein Families:	Druggable Genome, Phosphatase
Protein Pathways:	Cell cycle, Progesterone-mediated oocyte maturation

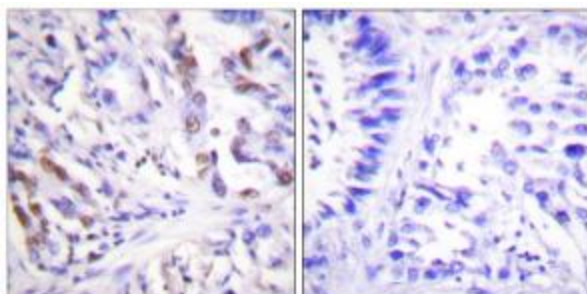


[View online »](#)

Product images:



Western blot analysis of extracts from HuvEc, using CDC25A (Phospho-Ser75) Antibody. The lane on the right is treated with the synthesized peptide.



Immunohistochemistry analysis of paraffin-embedded human lung carcinoma using CDC25A (Phospho-Ser75) Antibody. The picture on the right is treated with the synthesized peptide.