

Product datasheet for **TA313586**

CDC25A Rabbit Polyclonal Antibody

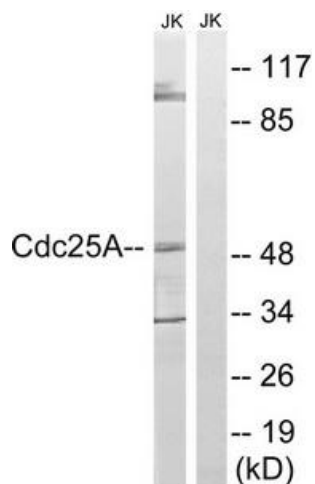
Product data:

Product Type:	Primary Antibodies
Applications:	WB
Recommended Dilution:	WB: 1:500~1:3000, ELISA: 1:10000
Reactivity:	Human, Mouse, Rat
Host:	Rabbit
Isotype:	IgG
Clonality:	Polyclonal
Immunogen:	The antiserum was produced against synthesized non-phosphopeptide derived from human CDC25A around the phosphorylation site of serine 178 (Q-N-SP-A-P).
Formulation:	Phosphate buffered saline (without Mg ²⁺ and Ca ²⁺), pH 7.4, 150mM NaCl, 0.02% sodium azide and 50% glycerol.
Concentration:	lot specific
Purification:	The antibody was affinity-purified from rabbit antiserum by affinity-chromatography using epitope-specific immunogen.
Conjugation:	Unconjugated
Storage:	Store at -20°C as received.
Stability:	Stable for 12 months from date of receipt.
Gene Name:	cell division cycle 25A
Database Link:	NP_001780 Entrez Gene 12530 Mouse Entrez Gene 171102 Rat Entrez Gene 993 Human P30304
Synonyms:	CDC25A2
Note:	CDC25A (Ab-178) antibody detects endogenous levels of total CDC25A protein.
Protein Families:	Druggable Genome, Phosphatase
Protein Pathways:	Cell cycle, Progesterone-mediated oocyte maturation

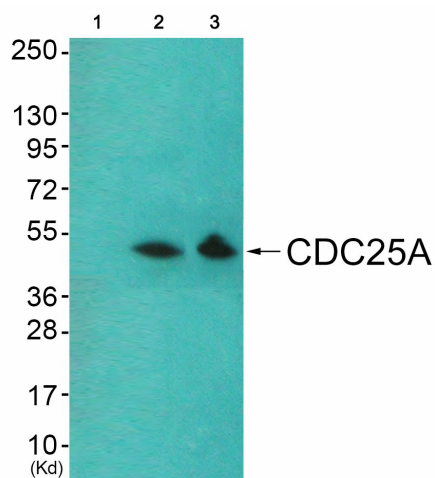


[View online »](#)

Product images:



Western blot analysis of extracts from Jurkat cells, using CDC25A (Ab-178) antibody. The lane on the right is treated with the synthesized peptide.



Western blot analysis of extracts from HeLa cells (Lane 2) and 293 cells (Lane 3), using CDC25A (Ab-178) Antibody. The lane on the left is treated with synthesized peptide.