

## Product datasheet for **TA313583**

### CDC2L1 (CDK11B) Rabbit Polyclonal Antibody

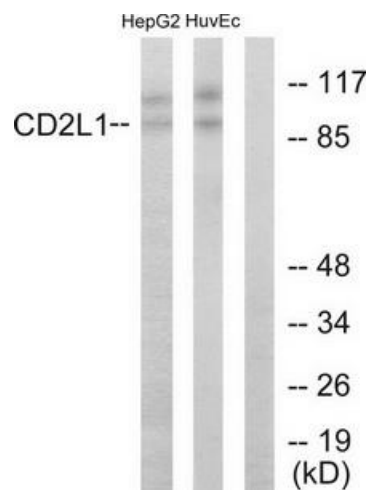
#### Product data:

Product Type:	Primary Antibodies
Applications:	WB
Recommended Dilution:	WB: 1:500~1:3000, ELISA: 1:20000
Reactivity:	Human, Mouse
Host:	Rabbit
Isotype:	IgG
Clonality:	Polyclonal
Immunogen:	The antiserum was produced against synthesized peptide derived from N-terminal of human CD2L1.
Formulation:	Phosphate buffered saline (without Mg <sup>2+</sup> and Ca <sup>2+</sup> ), pH 7.4, 150mM NaCl, 0.02% sodium azide and 50% glycerol.
Concentration:	lot specific
Purification:	The antibody was affinity-purified from rabbit antiserum by affinity-chromatography using epitope-specific immunogen.
Conjugation:	Unconjugated
Storage:	Store at -20°C as received.
Stability:	Stable for 12 months from date of receipt.
Gene Name:	cyclin-dependent kinase 11B
Database Link:	<a href="#">NP_277021</a> <a href="#">Entrez Gene 12537 Mouse</a> <a href="#">Entrez Gene 984 Human</a> <a href="#">P21127</a>
Synonyms:	CDC2L1; CDK11; CDK11-p46; CDK11-p58; CDK11-p110; CLK-1; p58; p58CDC2L1; p58CLK-1; PITSLREA
Note:	CD2L1 antibody detects endogenous levels of total CD2L1 protein.
Protein Families:	Druggable Genome, Transcription Factors



[View online »](#)

## Product images:



Western blot analysis of extracts from HepG2 cells and HUVEC cells, using CD2L1 antibody. The lane on the right is treated with the synthesized peptide.