

Product datasheet for **TA313576**

CD22 Rabbit Polyclonal Antibody

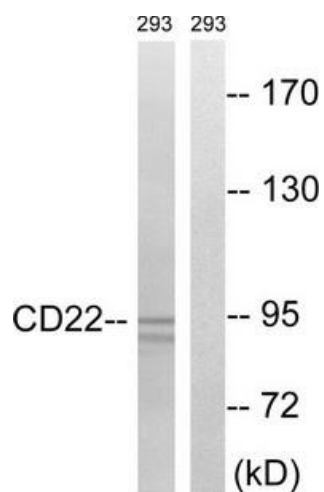
Product data:

Product Type:	Primary Antibodies
Applications:	WB
Recommended Dilution:	WB: 1:500~1:3000, ELISA: 1:40000
Reactivity:	Human
Host:	Rabbit
Isotype:	IgG
Clonality:	Polyclonal
Immunogen:	The antiserum was produced against synthesized non-phosphopeptide derived from human BL-CAM around the phosphorylation site of tyrosine 807 (G-D-YP-E-N).
Formulation:	Phosphate buffered saline (without Mg ²⁺ and Ca ²⁺), pH 7.4, 150mM NaCl, 0.02% sodium azide and 50% glycerol.
Concentration:	lot specific
Purification:	The antibody was affinity-purified from rabbit antiserum by affinity-chromatography using epitope-specific immunogen.
Conjugation:	Unconjugated
Storage:	Store at -20°C as received.
Stability:	Stable for 12 months from date of receipt.
Gene Name:	CD22 molecule
Database Link:	NP_001172028 Entrez Gene 933 Human P20273
Synonyms:	SIGLEC-2; SIGLEC2
Note:	BL-CAM (Ab-807) antibody detects endogenous levels of total BL-CAM protein.
Protein Families:	Druggable Genome, Transmembrane
Protein Pathways:	B cell receptor signaling pathway, Cell adhesion molecules (CAMs), Hematopoietic cell lineage



[View online »](#)

Product images:



Western blot analysis of extracts from 293 cells, treated with Ca^{2+} (40nM, 40mins), using BL-CAM (Ab-807) antibody. The lane on the right is treated with the synthesized peptide.