

Product datasheet for **TA313575**

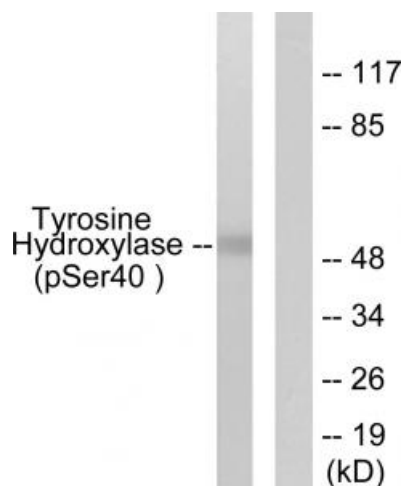
CD6 Rabbit Polyclonal Antibody

Product data:

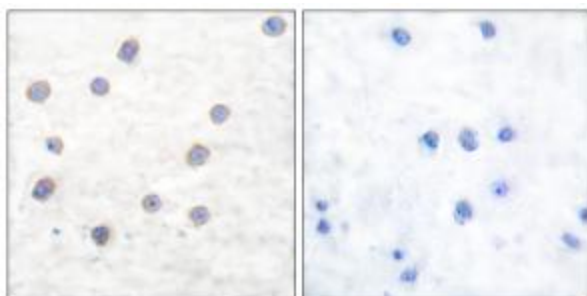
Product Type:	Primary Antibodies
Applications:	IHC, WB
Recommended Dilution:	WB: 1:500~3000, IHC: 1:50~100, ELISA: 1:40000
Reactivity:	Human, Mouse, Rat
Modifications:	Phospho-specific
Host:	Rabbit
Isotype:	IgG
Clonality:	Polyclonal
Immunogen:	The antiserum was produced against synthesized phosphopeptide derived from human Tyrosine Hydroxylase around the phosphorylation site of serine 40 (R-Q-SP-L-I).
Formulation:	Phosphate buffered saline (without Mg ²⁺ and Ca ²⁺), pH 7.4, 150mM NaCl, 0.02% sodium azide and 50% glycerol.
Concentration:	lot specific
Purification:	The antibody was affinity-purified from rabbit antiserum by affinity-chromatography using epitope-specific immunogen.
Conjugation:	Unconjugated
Storage:	Store at -20°C as received.
Stability:	Stable for 12 months from date of receipt.
Gene Name:	CD6 molecule
Database Link:	NP_006716 Entrez Gene 12511 Mouse Entrez Gene 25752 Rat Entrez Gene 923 Human P30203
Synonyms:	TP120
Note:	Tyrosine Hydroxylase (phospho-Ser40) antibody detects endogenous levels of Tyrosine Hydroxylase only when phosphorylated at serine 40.
Protein Families:	Druggable Genome, Transmembrane
Protein Pathways:	Cell adhesion molecules (CAMs)



[View online »](#)

Product images:

Western blot analysis of extracts from RAW264.7 cells treated with UV (30mins), using Tyrosine Hydroxylase (phospho-Ser40) antibody. The lane on the right is treated with the synthesized peptide.



Immunohistochemical analysis of paraffin-embedded human brain tissue, using Tyrosine Hydroxylase (phospho-Ser40) antibody. The picture on the right is treated with the synthesized peptide.