

Product datasheet for **TA313572**

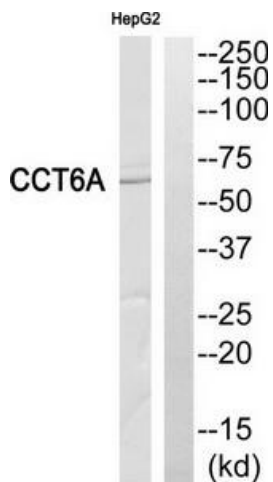
CCT6A Rabbit Polyclonal Antibody

Product data:

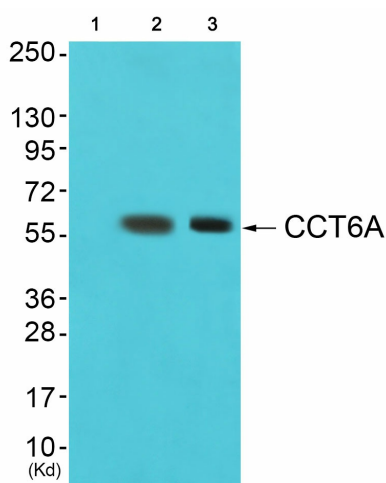
Product Type:	Primary Antibodies
Applications:	IHC, WB
Recommended Dilution:	WB: 1:500~1:3000, IHC: 1:50~1:100, ELISA: 1:10000
Reactivity:	Human, Mouse, Rat
Host:	Rabbit
Isotype:	IgG
Clonality:	Polyclonal
Immunogen:	The antiserum was produced against synthesized peptide derived from internal of human CCT6A.
Formulation:	Phosphate buffered saline (without Mg ²⁺ and Ca ²⁺), pH 7.4, 150mM NaCl, 0.02% sodium azide and 50% glycerol.
Concentration:	lot specific
Purification:	The antibody was affinity-purified from rabbit antiserum by affinity-chromatography using epitope-specific immunogen.
Conjugation:	Unconjugated
Storage:	Store at -20°C as received.
Stability:	Stable for 12 months from date of receipt.
Gene Name:	chaperonin containing TCP1 subunit 6A
Database Link:	NP_001009186 Entrez Gene 12466 MouseEntrez Gene 288620 RatEntrez Gene 908 Human P40227
Synonyms:	CCT-zeta; CCT-zeta-1; CCT6; Cctz; HTR3; MoDP-2; TCP-1-zeta; TCP20; TCPZ; TTCP20
Note:	CCT6A antibody detects endogenous levels of total CCT6A protein.



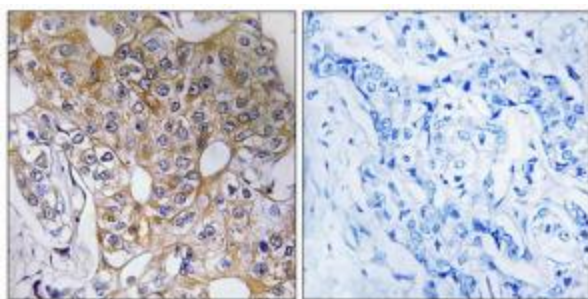
[View online »](#)

Product images:


Western blot analysis of extracts from HepG2 cells, using CCT6A antibody. The lane on the right is treated with the synthesized peptide.



Western blot analysis of extracts from cos-7 cells (Lane 2) and 293 cells (Lane 3), using CCT6A Antibody. The lane on the left is treated with synthesized peptide.



Immunohistochemistry analysis of paraffin-embedded human breast carcinoma tissue, using CCT6A antibody. The picture on the right is treated with the synthesized peptide.