

Product datasheet for **TA313569**

Cyclin D3 (CCND3) Rabbit Polyclonal Antibody

Product data:

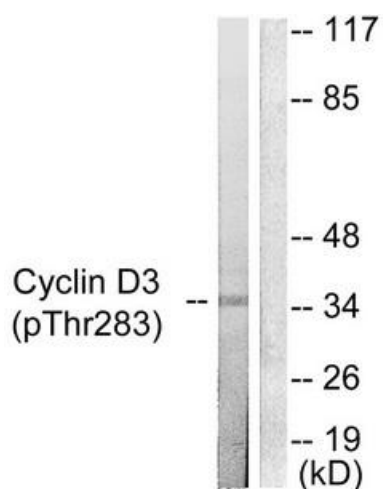
Product Type:	Primary Antibodies
Applications:	IHC, WB
Recommended Dilution:	WB: 1:500~1000, IHC: 1:50~1:100, ELISA: 1:1000
Reactivity:	Human, Mouse, Rat
Modifications:	Phospho-specific
Host:	Rabbit
Isotype:	IgG
Clonality:	Polyclonal
Immunogen:	The antiserum was produced against synthesized phosphopeptide derived from human Cyclin D3 around the phosphorylation site of threonine 283 (T-S-TP-P-T).
Formulation:	Phosphate buffered saline (without Mg ²⁺ and Ca ²⁺), pH 7.4, 150mM NaCl, 0.02% sodium azide and 50% glycerol.
Concentration:	lot specific
Purification:	The antibody was affinity-purified from rabbit antiserum by affinity-chromatography using epitope-specific immunogen.
Conjugation:	Unconjugated
Storage:	Store at -20°C as received.
Stability:	Stable for 12 months from date of receipt.
Gene Name:	cyclin D3
Database Link:	NP_001751 Entrez Gene 12445 Mouse Entrez Gene 25193 Rat Entrez Gene 896 Human P30281
Synonyms:	cyclin D3; D3-type cyclin; G1; OTTHUMP00000016390; S-specific cyclin D3
Note:	Cyclin D3 (Phospho-Thr283) antibody detects endogenous levels of Cyclin D3 only when phosphorylated at threonine 283.
Protein Families:	Druggable Genome



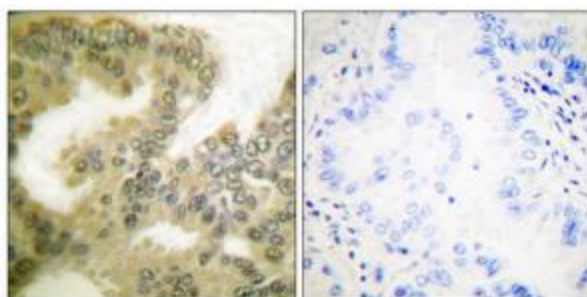
[View online »](#)

Protein Pathways: Cell cycle, Focal adhesion, Jak-STAT signaling pathway, p53 signaling pathway, Wnt signaling pathway

Product images:



Western blot analysis of extracts from K562 cells treated with UV (5mins), using Cyclin D3 (Phospho-Thr283) Antibody (#TA313569). The lane on the right is treated with the synthesized peptide.



Immunohistochemical analysis of paraffin-embedded human lung carcinoma tissue using Cyclin D3 (Phospho-Thr283) Antibody (#TA313569). The picture on the right is treated with the synthesized peptide.