

Product datasheet for **TA313567**

Cyclin D2 (CCND2) Rabbit Polyclonal Antibody

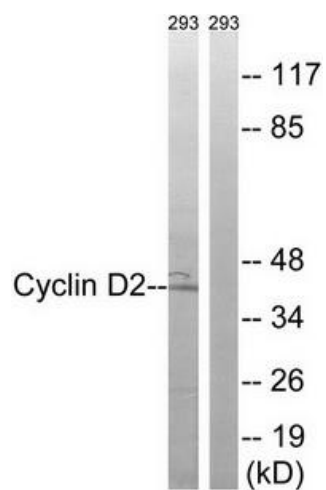
Product data:

Product Type:	Primary Antibodies
Applications:	WB
Recommended Dilution:	WB: 1:500~1:3000, ELISA: 1:20000
Reactivity:	Human, Mouse, Rat
Host:	Rabbit
Isotype:	IgG
Clonality:	Polyclonal
Immunogen:	The antiserum was produced against synthesized non-phosphopeptide derived from human Cyclin D2 around the phosphorylation site of threonine 280 (A-S-TP-P-T).
Formulation:	Phosphate buffered saline (without Mg ²⁺ and Ca ²⁺), pH 7.4, 150mM NaCl, 0.02% sodium azide and 50% glycerol.
Concentration:	lot specific
Purification:	The antibody was affinity-purified from rabbit antiserum by affinity-chromatography using epitope-specific immunogen.
Conjugation:	Unconjugated
Storage:	Store at -20°C as received.
Stability:	Stable for 12 months from date of receipt.
Gene Name:	cyclin D2
Database Link:	NP_001750 Entrez Gene 12444 MouseEntrez Gene 64033 RatEntrez Gene 894 Human P30279
Synonyms:	KIAK0002; MPPH3
Note:	Cyclin D2 (Ab-280) antibody detects endogenous levels of total Cyclin D2 protein.
Protein Families:	Druggable Genome
Protein Pathways:	Cell cycle, Focal adhesion, Jak-STAT signaling pathway, p53 signaling pathway, Wnt signaling pathway



[View online »](#)

Product images:



Western blot analysis of extracts from 293 cells, using Cyclin D2 (Ab-280) antibody. The lane on the right is treated with the synthesized peptide.