

Product datasheet for **TA313566**

Cyclin C (CCNC) Rabbit Polyclonal Antibody

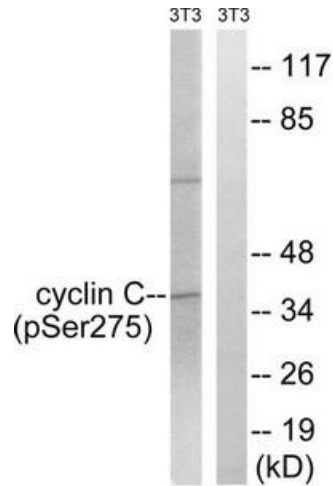
Product data:

Product Type:	Primary Antibodies
Applications:	IHC, WB
Recommended Dilution:	WB: 1:500~1:3000, IHC: 1:50~1:100, ELISA: 1:1000
Reactivity:	Human, Mouse, Rat
Modifications:	Phospho-specific
Host:	Rabbit
Isotype:	IgG
Clonality:	Polyclonal
Immunogen:	The antiserum was produced against synthesized phosphopeptide derived from human Cyclin C around the phosphorylation site of serine 275 (N-G-SP-Q-N).
Formulation:	Phosphate buffered saline (without Mg ²⁺ and Ca ²⁺), pH 7.4, 150mM NaCl, 0.02% sodium azide and 50% glycerol.
Concentration:	lot specific
Purification:	The antibody was affinity-purified from rabbit antiserum by affinity-chromatography using epitope-specific immunogen.
Conjugation:	Unconjugated
Storage:	Store at -20°C as received.
Stability:	Stable for 12 months from date of receipt.
Gene Name:	cyclin C
Database Link:	NP_005181 Entrez Gene 51813 Mouse Entrez Gene 114839 Rat Entrez Gene 892 Human P24863
Synonyms:	CycC
Note:	Cyclin C (Phospho-Ser275) antibody detects endogenous levels of Cyclin C only when phosphorylated at serine 275.
Protein Families:	Druggable Genome, Transcription Factors

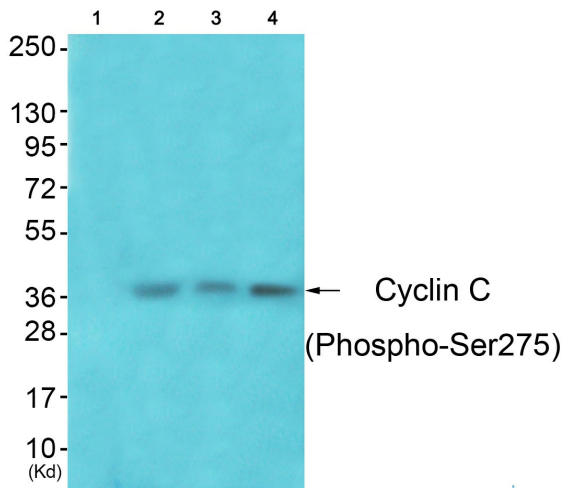


[View online »](#)

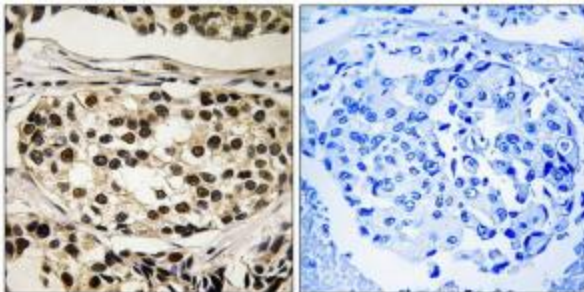
Product images:



Western blot analysis of extracts from 3T3 cells, treated with UV (15mins), using Cyclin C (Phospho-Ser275) antibody. The lane on the right is treated with the synthesized peptide.



Western blot analysis of extracts from 3T3 cells (Lane 2), A549 cells (Lane 3) and HeLa cells (Lane 4), using Cyclin C (Phospho-Ser275) Antibody. The lane on the left is treated with synthesized peptide.



Immunohistochemistry analysis of paraffin-embedded human breast carcinoma tissue using Cyclin C (Phospho-Ser275) antibody. The picture on the right is treated with the synthesized peptide.