

## Product datasheet for **TA313565**

### Cyclin C (CCNC) Rabbit Polyclonal Antibody

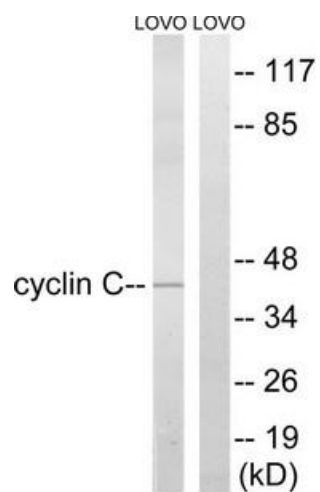
#### Product data:

Product Type:	Primary Antibodies
Applications:	WB
Recommended Dilution:	WB: 1:500~1:3000, ELISA: 1:1000
Reactivity:	Human, Mouse, Rat
Host:	Rabbit
Isotype:	IgG
Clonality:	Polyclonal
Immunogen:	The antiserum was produced against synthesized non-phosphopeptide derived from human Cyclin C around the phosphorylation site of serine 275 (N-G-SP-Q-N).
Formulation:	Phosphate buffered saline (without Mg <sup>2+</sup> and Ca <sup>2+</sup> ), pH 7.4, 150mM NaCl, 0.02% sodium azide and 50% glycerol.
Concentration:	lot specific
Purification:	The antibody was affinity-purified from rabbit antiserum by affinity-chromatography using epitope-specific immunogen.
Conjugation:	Unconjugated
Storage:	Store at -20°C as received.
Stability:	Stable for 12 months from date of receipt.
Gene Name:	cyclin C
Database Link:	<a href="#">NP_001013417</a> <a href="#">Entrez Gene 51813 Mouse</a> <a href="#">Entrez Gene 114839 Rat</a> <a href="#">Entrez Gene 892 Human</a> <a href="#">P24863</a>
Synonyms:	CycC
Note:	Cyclin C (Ab-275) antibody detects endogenous levels of total Cyclin C protein.
Protein Families:	Druggable Genome, Transcription Factors



[View online »](#)

## Product images:



Western blot analysis of extracts from LOVO cells, using Cyclin C (Ab-275) antibody. The lane on the right is treated with the synthesized peptide.