

Product datasheet for **TA313563**

CBFB Rabbit Polyclonal Antibody

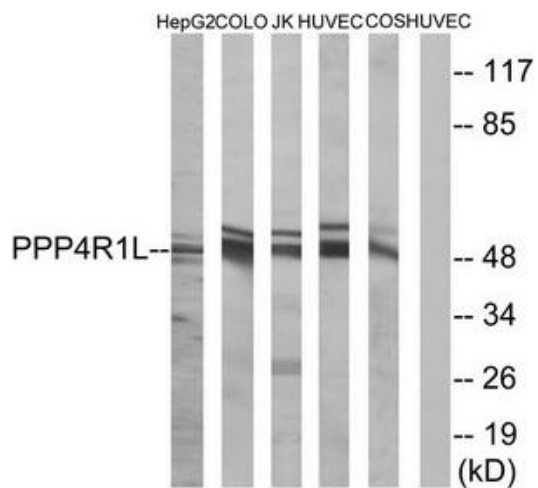
Product data:

Product Type:	Primary Antibodies
Applications:	WB
Recommended Dilution:	WB: 1:500~1:3000, ELISA: 1:10000
Reactivity:	Human
Host:	Rabbit
Isotype:	IgG
Clonality:	Polyclonal
Immunogen:	The antiserum was produced against synthesized peptide derived from internal of human PPP4R1L.
Formulation:	Phosphate buffered saline (without Mg ²⁺ and Ca ²⁺), pH 7.4, 150mM NaCl, 0.02% sodium azide and 50% glycerol.
Concentration:	lot specific
Purification:	The antibody was affinity-purified from rabbit antiserum by affinity-chromatography using epitope-specific immunogen.
Conjugation:	Unconjugated
Storage:	Store at -20°C as received.
Stability:	Stable for 12 months from date of receipt.
Gene Name:	core-binding factor, beta subunit
Database Link:	NP_001746 Entrez Gene 865 Human Q13951
Synonyms:	PEBP2B
Note:	PPP4R1L antibody detects endogenous levels of total PPP4R1L protein.
Protein Families:	Druggable Genome, Transcription Factors



[View online »](#)

Product images:



Western blot analysis of extracts from HepG2 cells, COLO cells, Jurkat cells, HUVEC cells and COS cells, using PPP4R1L antibody. The lane on the right is treated with the synthesized peptide.