

Product datasheet for **TA313559**

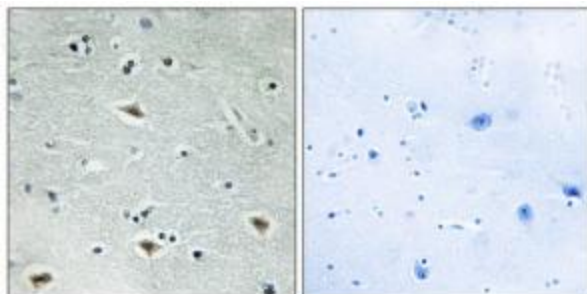
CBFA2T3 Rabbit Polyclonal Antibody

Product data:

Product Type:	Primary Antibodies
Applications:	IHC
Recommended Dilution:	IHC: 1:50~1:100, ELISA: 1:20000
Reactivity:	Human, Mouse
Host:	Rabbit
Isotype:	IgG
Clonality:	Polyclonal
Immunogen:	The antiserum was produced against synthesized peptide derived from internal of human MTG16.
Formulation:	Phosphate buffered saline (without Mg ²⁺ and Ca ²⁺), pH 7.4, 150mM NaCl, 0.02% sodium azide and 50% glycerol.
Concentration:	lot specific
Purification:	The antibody was affinity-purified from rabbit antiserum by affinity-chromatography using epitope-specific immunogen.
Conjugation:	Unconjugated
Storage:	Store at -20°C as received.
Stability:	Stable for 12 months from date of receipt.
Gene Name:	CBFA2/RUNX1 translocation partner 3
Database Link:	NP_005178 Entrez Gene 12398 Mouse Entrez Gene 863 Human O75081
Synonyms:	ETO2; MTG16; MTGR2; ZMYND4
Note:	MTG16 antibody detects endogenous levels of total MTG16 protein.
Protein Families:	Transcription Factors



[View online »](#)

Product images:

Immunohistochemistry analysis of paraffin-embedded human brain tissue, using MTG16 antibody. The picture on the right is treated with the synthesized peptide.