

Product datasheet for **TA313556**

Caspase 2 (CASP2) Rabbit Polyclonal Antibody

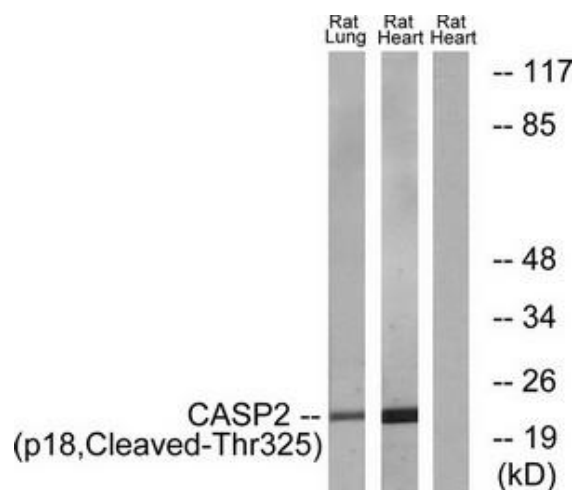
Product data:

Product Type:	Primary Antibodies
Applications:	WB
Recommended Dilution:	WB: 1:500~1:3000, ELISA: 1:10000
Reactivity:	Human, Mouse, Rat
Host:	Rabbit
Isotype:	IgG
Clonality:	Polyclonal
Immunogen:	The antiserum was produced against synthesized peptide derived from human CASP2.
Formulation:	Phosphate buffered saline (without Mg ²⁺ and Ca ²⁺), pH 7.4, 150mM NaCl, 0.02% sodium azide and 50% glycerol.
Concentration:	lot specific
Purification:	The antibody was affinity-purified from rabbit antiserum by affinity-chromatography using epitope-specific immunogen.
Conjugation:	Unconjugated
Storage:	Store at -20°C as received.
Stability:	Stable for 12 months from date of receipt.
Gene Name:	caspase 2
Database Link:	NP_001215 Entrez Gene 12366 Mouse Entrez Gene 64314 Rat Entrez Gene 835 Human P42575
Synonyms:	CASP-2; ICH1; NEDD-2; NEDD2; PPP1R57
Note:	CASP2 (p18, Cleaved-Thr325) antibody detects endogenous levels of fragment of activated CASP2 resulting from cleavage adjacent to Thr325.
Protein Families:	Druggable Genome, Protease



[View online »](#)

Product images:



Western blot analysis of extracts from rat lung cells and rat heart cells, using CASP2 (p18, Cleaved-Thr325) antibody. The lane on the right is treated with the synthesized peptide.