

Product datasheet for **TA313553**

CAMK2G Rabbit Polyclonal Antibody

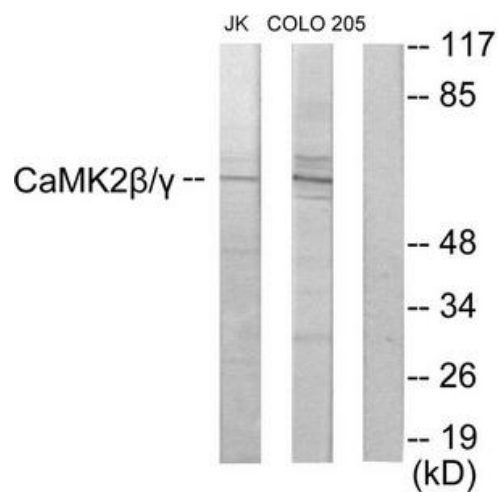
Product data:

Product Type:	Primary Antibodies
Applications:	WB
Recommended Dilution:	WB: 1:500~1:3000, ELISA: 1:20000
Reactivity:	Human, Mouse, Rat
Host:	Rabbit
Isotype:	IgG
Clonality:	Polyclonal
Immunogen:	The antiserum was produced against synthesized peptide derived from C-terminal of human CaMK2 β /?
Formulation:	Phosphate buffered saline (without Mg ²⁺ and Ca ²⁺), pH 7.4, 150mM NaCl, 0.02% sodium azide and 50% glycerol.
Concentration:	lot specific
Purification:	The antibody was affinity-purified from rabbit antiserum by affinity-chromatography using epitope-specific immunogen.
Conjugation:	Unconjugated
Storage:	Store at -20°C as received.
Stability:	Stable for 12 months from date of receipt.
Gene Name:	calcium/calmodulin dependent protein kinase II gamma
Database Link:	NP_001191421 Entrez Gene 12325 MouseEntrez Gene 171140 RatEntrez Gene 818 Human Q13555
Synonyms:	CAMK; CAMK-II; CAMKG
Note:	CaMK2./ antibody detects endogenous levels of total CaMK2./ protein.
Protein Families:	Druggable Genome, Protein Kinase
Protein Pathways:	Calcium signaling pathway, ErbB signaling pathway, Glioma, GnRH signaling pathway, Long-term potentiation, Melanogenesis, Neurotrophin signaling pathway, Olfactory transduction, Oocyte meiosis, Wnt signaling pathway



[View online »](#)

Product images:



Western blot analysis of extracts from Jurkat cells and COLO205 cells, using CaMK2β/γ antibody. The lane on the right is treated with the synthesized peptide.