

Product datasheet for **TA313546**

CAMK2A Rabbit Polyclonal Antibody

Product data:

Product Type:	Primary Antibodies
Applications:	IHC, WB
Recommended Dilution:	WB: 1:500~1:3000, IHC: 1:50~1:100, ELISA: 1:5000
Reactivity:	Human, Mouse, Rat
Modifications:	Phospho-specific
Host:	Rabbit
Isotype:	IgG
Clonality:	Polyclonal
Immunogen:	The antiserum was produced against synthesized phosphopeptide derived from human CaMKII around the phosphorylation site of threonine 305 (I-L-TP-T-M).
Formulation:	Phosphate buffered saline (without Mg ²⁺ and Ca ²⁺), pH 7.4, 150mM NaCl, 0.02% sodium azide and 50% glycerol.
Concentration:	lot specific
Purification:	The antibody was affinity-purified from rabbit antiserum by affinity-chromatography using epitope-specific immunogen.
Conjugation:	Unconjugated
Storage:	Store at -20°C as received.
Stability:	Stable for 12 months from date of receipt.
Gene Name:	calcium/calmodulin dependent protein kinase II alpha
Database Link:	NP_057065 Entrez Gene 12322 Mouse Entrez Gene 25400 Rat Entrez Gene 815 Human Q9UQM7
Synonyms:	CAMKA
Note:	CaMKII (Phospho-Thr305) antibody detects endogenous levels of CaMKII only when phosphorylated at threonine 305.
Protein Families:	Druggable Genome, Protein Kinase

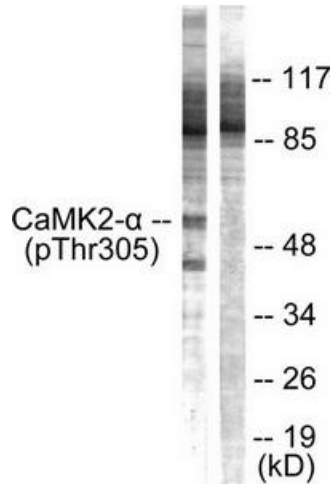


[View online »](#)

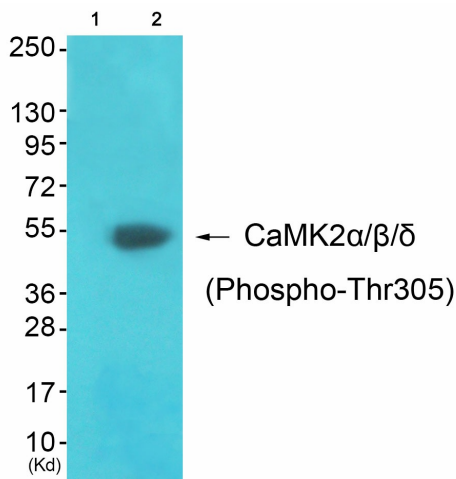
Protein Pathways:

Calcium signaling pathway, ErbB signaling pathway, Glioma, GnRH signaling pathway, Long-term potentiation, Melanogenesis, Neurotrophin signaling pathway, Olfactory transduction, Oocyte meiosis, Wnt signaling pathway

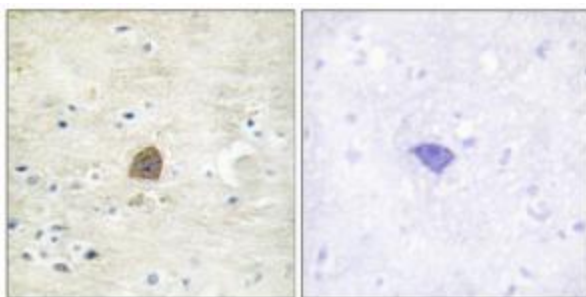
Product images:



Western blot analysis of extracts from NIH/3T3 cells, using CaMKII (Phospho-Thr305) Antibody. The lane on the right is treated with the synthesized peptide.



Western blot analysis of extracts from 3T3 cells (Lane 2), using CaMK2α/β/δ (Phospho-Thr305) Antibody. The lane on the left is treated with synthesized peptide.



Immunohistochemical analysis of paraffin-embedded human brain tissue using CaMKII (Phospho-Thr305) Antibody. The picture on the right is treated with the synthesized peptide.