

Product datasheet for **TA313544**

Caldesmon (CALD1) Rabbit Polyclonal Antibody

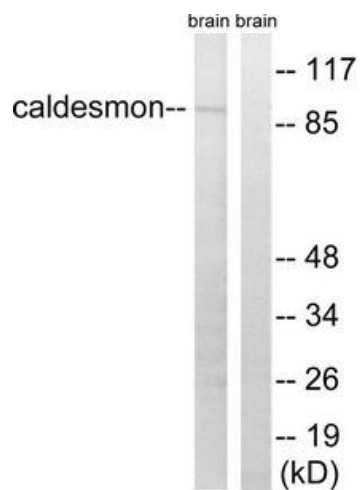
Product data:

Product Type:	Primary Antibodies
Applications:	WB
Recommended Dilution:	WB: 1:500~1:3000, ELISA: 1:5000
Reactivity:	Human, Mouse, Rat
Host:	Rabbit
Isotype:	IgG
Clonality:	Polyclonal
Immunogen:	The antiserum was produced against synthesized non-phosphopeptide derived from human Caldesmon around the phosphorylation site of serine 759 (N-K-SP-P-A).
Formulation:	Phosphate buffered saline (without Mg ²⁺ and Ca ²⁺), pH 7.4, 150mM NaCl, 0.02% sodium azide and 50% glycerol.
Concentration:	lot specific
Purification:	The antibody was affinity-purified from rabbit antiserum by affinity-chromatography using epitope-specific immunogen.
Conjugation:	Unconjugated
Storage:	Store at -20°C as received.
Stability:	Stable for 12 months from date of receipt.
Gene Name:	caldesmon 1
Database Link:	NP_004333 Entrez Gene 25687 Rat Entrez Gene 109624 Mouse Entrez Gene 800 Human Q05682
Synonyms:	CDM; H-CAD; HCAD; L-CAD; LCAD; NAG22
Note:	Caldesmon (Ab-759) antibody detects endogenous levels of total Caldesmon protein.
Protein Pathways:	Vascular smooth muscle contraction



[View online »](#)

Product images:



Western blot analysis of extracts from mouse brain cells, using Caldesmon (Ab-759) antibody. The lane on the right is treated with the synthesized peptide.