

## Product datasheet for **TA313542**

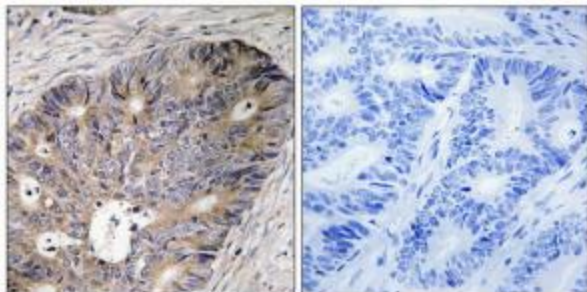
### CAD Rabbit Polyclonal Antibody

#### Product data:

Product Type:	Primary Antibodies
Applications:	IHC
Recommended Dilution:	IHC: 1:50~1:100, ELISA: 1:20000
Reactivity:	Human, Mouse
Host:	Rabbit
Isotype:	IgG
Clonality:	Polyclonal
Immunogen:	The antiserum was produced against synthesized peptide derived from Internal of human CAD.
Formulation:	Phosphate buffered saline (without Mg <sup>2+</sup> and Ca <sup>2+</sup> ), pH 7.4, 150mM NaCl, 0.02% sodium azide and 50% glycerol.
Concentration:	lot specific
Purification:	The antibody was affinity-purified from rabbit antiserum by affinity-chromatography using epitope-specific immunogen.
Conjugation:	Unconjugated
Storage:	Store at -20°C as received.
Stability:	Stable for 12 months from date of receipt.
Gene Name:	carbamoyl-phosphate synthetase 2, aspartate transcarbamylase, and dihydroorotase
Database Link:	<a href="#">NP_004332</a> <a href="#">Entrez Gene 69719 Mouse</a> <a href="#">Entrez Gene 790 Human</a> <a href="#">P27708</a>
Synonyms:	and dihydroorotase; aspartate transcarbamylase; CAD trifunctional protein; carbamoyl-phosphate synthetase 2; carbamoylphosphate synthetase 2; dihydroorotase; multifunctional protein CAD
Note:	CAD antibody detects endogenous levels of total CAD protein.
Protein Families:	Druggable Genome
Protein Pathways:	Alanine, aspartate and glutamate metabolism, Metabolic pathways, Pyrimidine metabolism



[View online »](#)

**Product images:**

Immunohistochemistry analysis of paraffin-embedded human colon carcinoma tissue using CAD antibody. The picture on the right is treated with the synthesized peptide.